



Irvine Ranch
Water District



WELCOME TO IRVINE RANCH WATER DISTRICT

CALIFORNIA WATER EFFICIENCY
PARTNERSHIP PLENARY

MARCH 18, 2026

AGENDA

- Welcome to IRWD
- Who we are
- What we do
- How we do it
- How we know it works
- Cool new stuff



WHO ARE WE?

A not-for-profit local public agency serving residents and businesses in central O.C.



181 square miles

20% of Orange County



450,000 Residents served

639,000 Daytime population served

126,000 Water service connections

121,000 Sewer service connections



Serving all or parts of:

Irvine

Newport Beach

Costa Mesa

Unincorporated O.C.

Lake Forest

Tustin

Orange



IRVINE RANCH WATER DISTRICT SERVICES



DRINKING WATER

2,127 miles of pipeline
125,000 metered connections
37 closed reservoir tanks
27 wells
6 water treatment plants
Irvine Lake stores water for drinking and irrigation



SEWER COLLECTION

1,518 miles of collection pipes
2 sewage treatment plants
1 biosolids and energy recovery facility
Sewer water treated and reused for nondrinking purposes



RECYCLED WATER

583 miles of pipeline
6,400+ metered connections
135+ dual-plumbed buildings
28 million gallons a day
4 recycled water reservoirs, (1 planned for expansion)

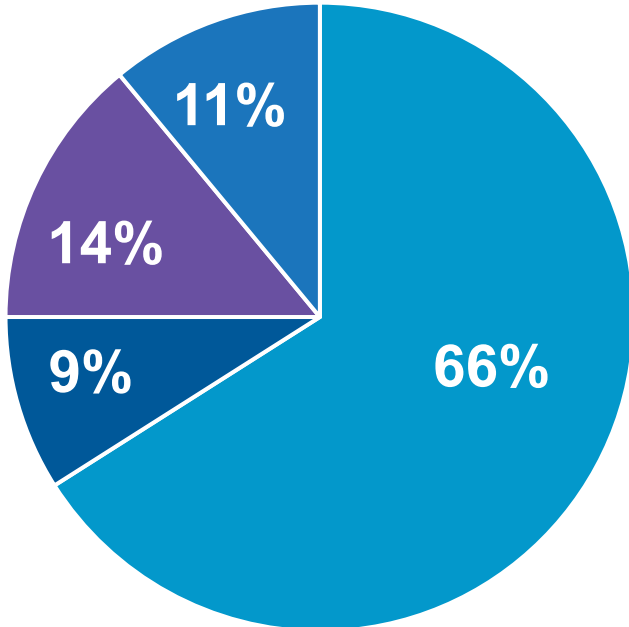


URBAN RUNOFF TREATMENT

46 wetland treatment sites, including San Joaquin Marsh
34 tons of nutrients removed annually
Cost-effective and environmentally sound
Modeled after natural treatment ponds

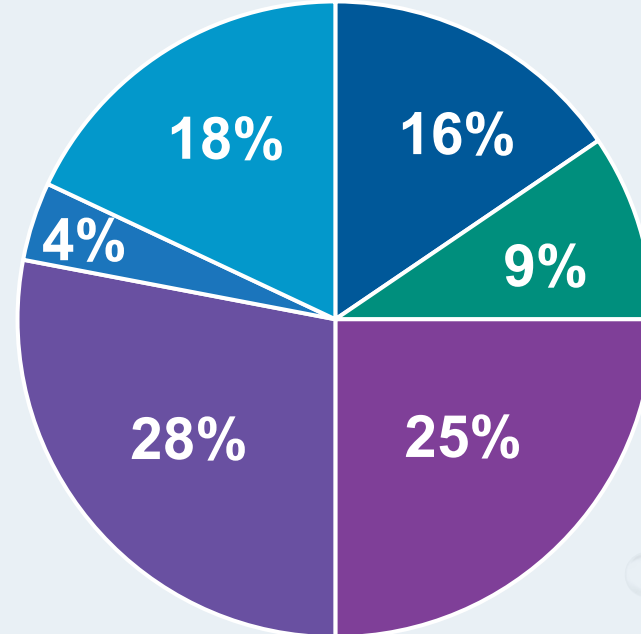
IRWD WATER SOURCE PORTFOLIO

1990

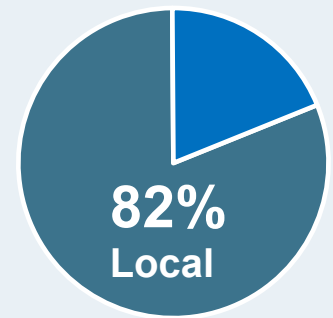


- Imported water - 66%
- Clear groundwater - 9%
- Recycled water - 14%
- Rain capture (Irvine Lake) - 11%

Today



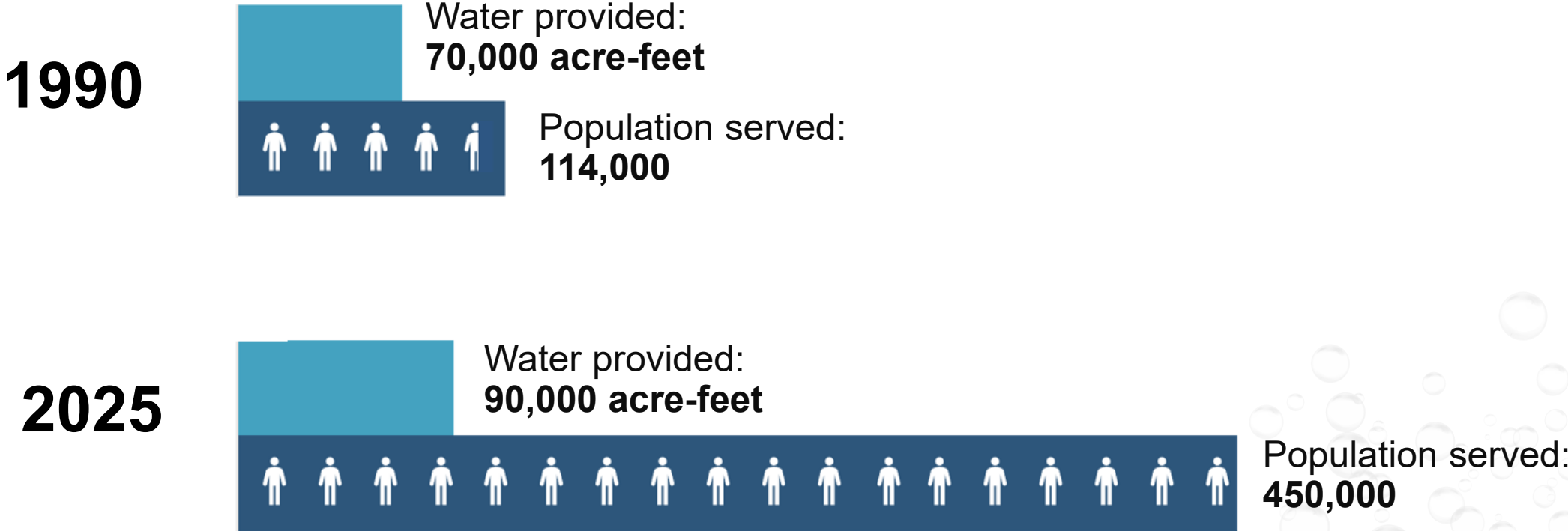
- Clear groundwater - 16%
- Treated groundwater - 9%
- Indirect potable reuse - 25%
- Recycled water - 28%
- Rain capture (Irvine Lake) - 4%
- Imported water - 18%



More than 50% of IRWD's water supply is reused

GROWING COMMUNITY, GROWING EFFICIENCY

IRWD customers are among the most efficient in California



MAKING CONSERVATION A CALIFORNIA WAY OF LIFE



HOW IRWD ENCOURAGES EFFICIENT CUSTOMERS



BUDGET-BASED RATES

Encourage Efficiency

Site specific

Strong price signal

No watering restrictions

Accommodate special needs



CUSTOMER PROGRAMS

Achieve Efficiency

Rebates

Workshops

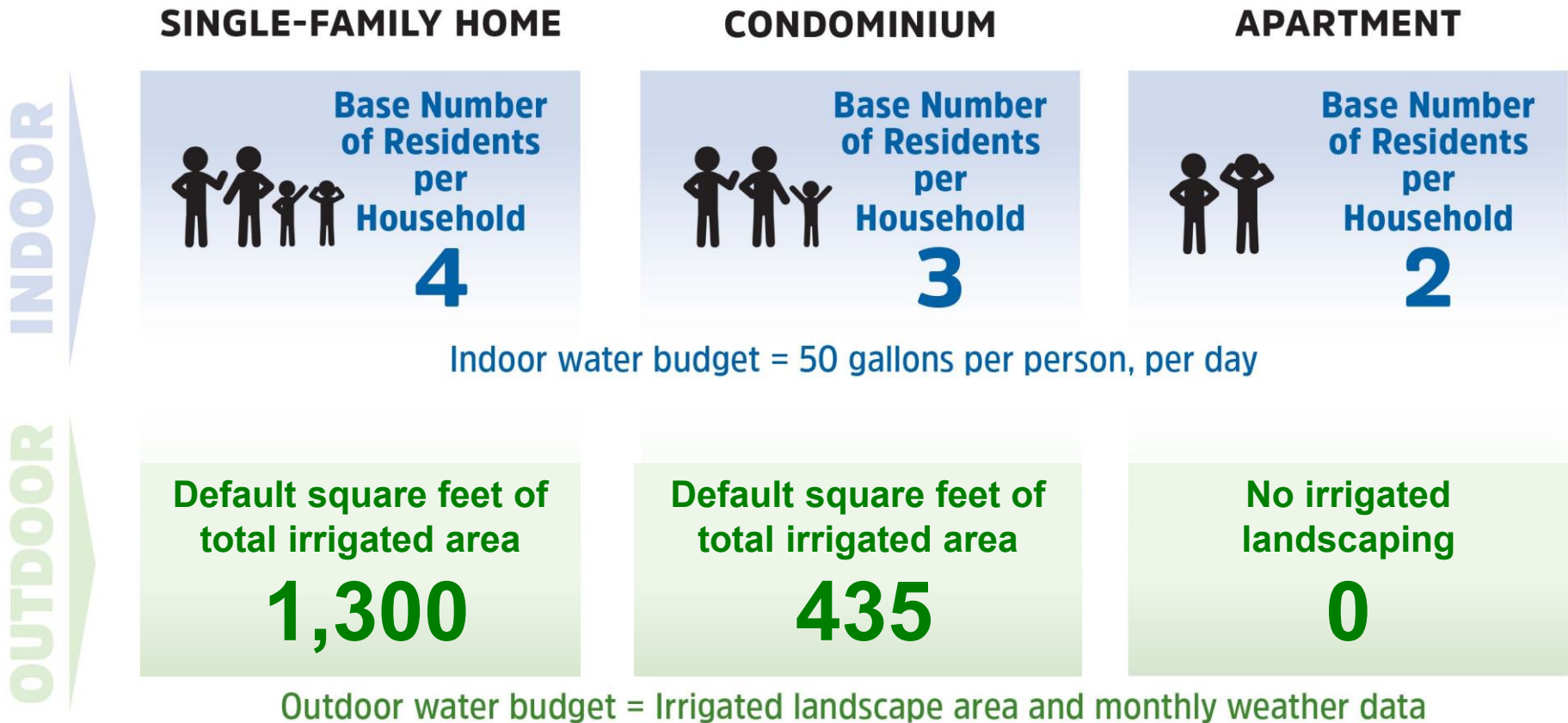
Hotline

Home Check ups

Online resources

RESIDENTIAL CUSTOMER WATER BUDGETS

- Defaults provide a minimum value
- Based on dwelling type
- Adjusted through variances



IRWD RESIDENTIAL BUDGET-BASED WATER RATES

Rate tier	Monthly water budget use	Rate/CCF	Result
1 - Low volume	Up to 40%	\$2.07	Within budget
2 - Base	41% to 100%	\$2.72	
3 - Inefficient	101% to 140%	\$7.51	Over budget
4 - Wasteful	141% and over	\$18.60	

Typical residential customer bill example:

Customer uses 11 CCF

Total bill = \$78.57

Customer uses 20 CCF

Total bill = \$190.52

Total bill includes water cost, water service charge and sewer service charge

Monthly water budget provides 100% of water needs for indoors and outdoors

WATER EFFICIENCY PROGRAMS

- Home Check-ups
- Water Star Business
- Large Landscape Programs
- Device Rebates
- Device Direct Install
- Sprinkler Repair
- Landscape Workshops
- Special Sweepstakes
- Mulch Madness
- Community Events
- Customer Resources
- Demonstration Gardens
- Log-a-Leak



Sprinkler Repair Program.
Get professional help. We'll pay half.

Keeping your sprinkler system in tip-top shape can be challenging, but it saves water. We designed a program to make it easy and affordable for you to fine-tune your irrigation system for significant water savings.

Our Sprinkler Repair Program provides expert help and covers 50% of your repair expenses.
Note: This program was previously known as the Landscape Tuneup Program.

IRWD has teamed up with Conserv Inc. to offer landscape irrigation repair services to qualifying customers, and we'll pay half the cost for repairs. To qualify:

- Applicant must be a residential customer of IRWD in good financial standing. (No delinquencies on IRWD bills in the last 12 months.)



SPREAD >> COVER >> THRIVE

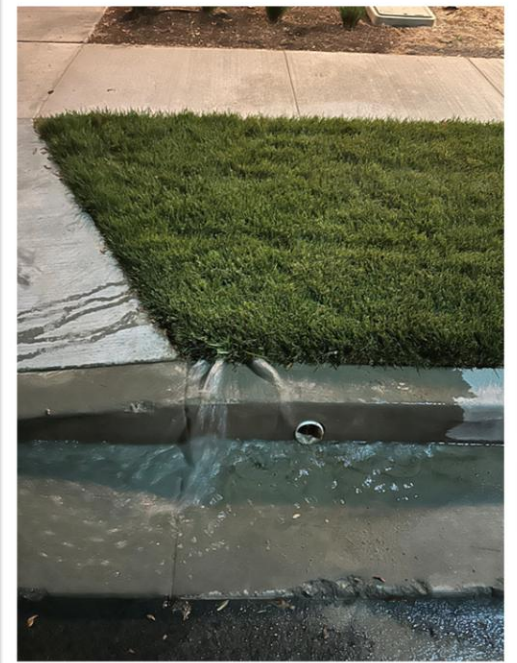
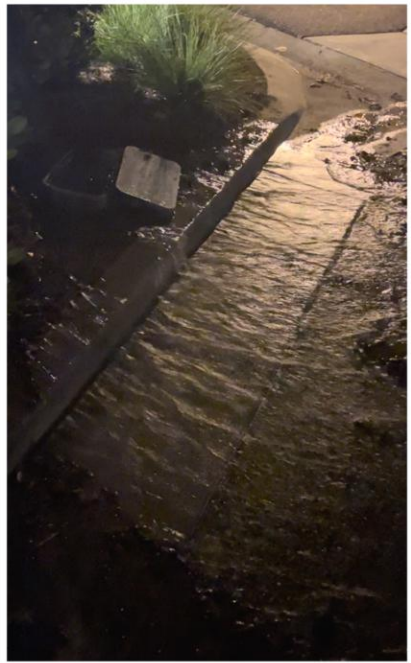
MULCH MADNESS

ALL SEASON LONG!

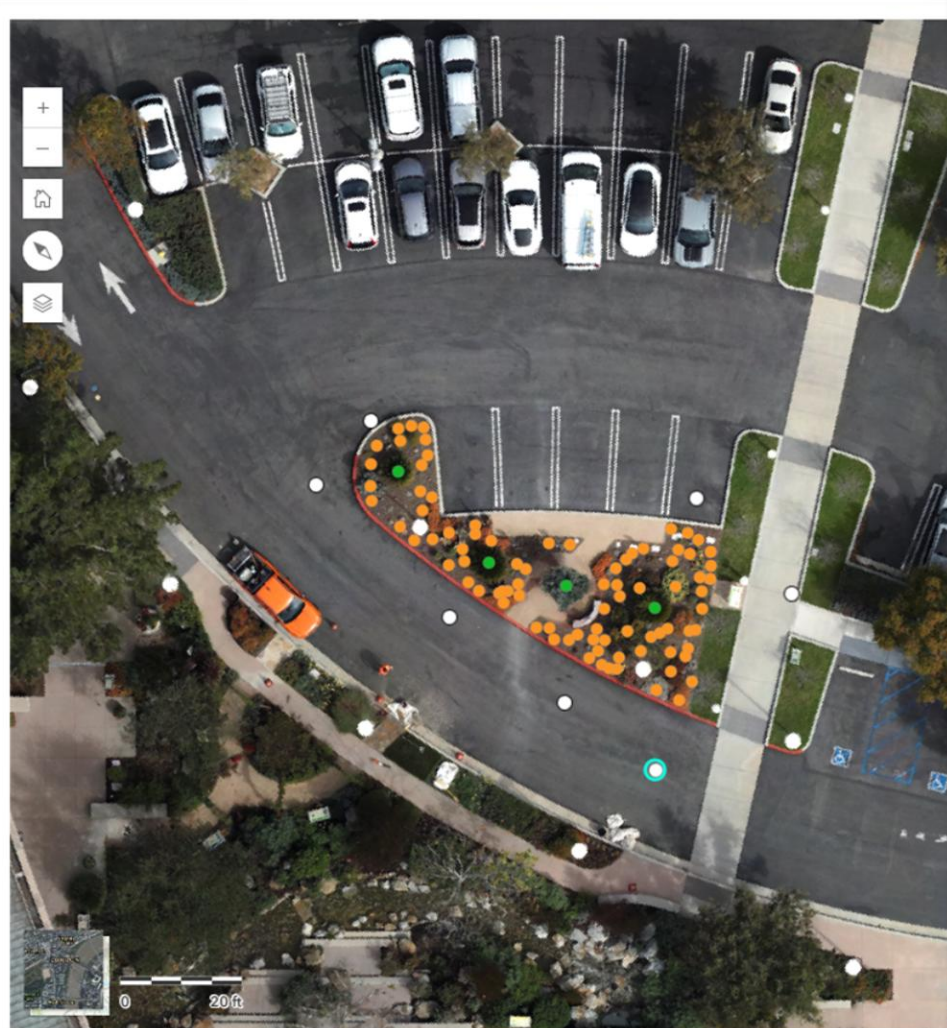


Conserv

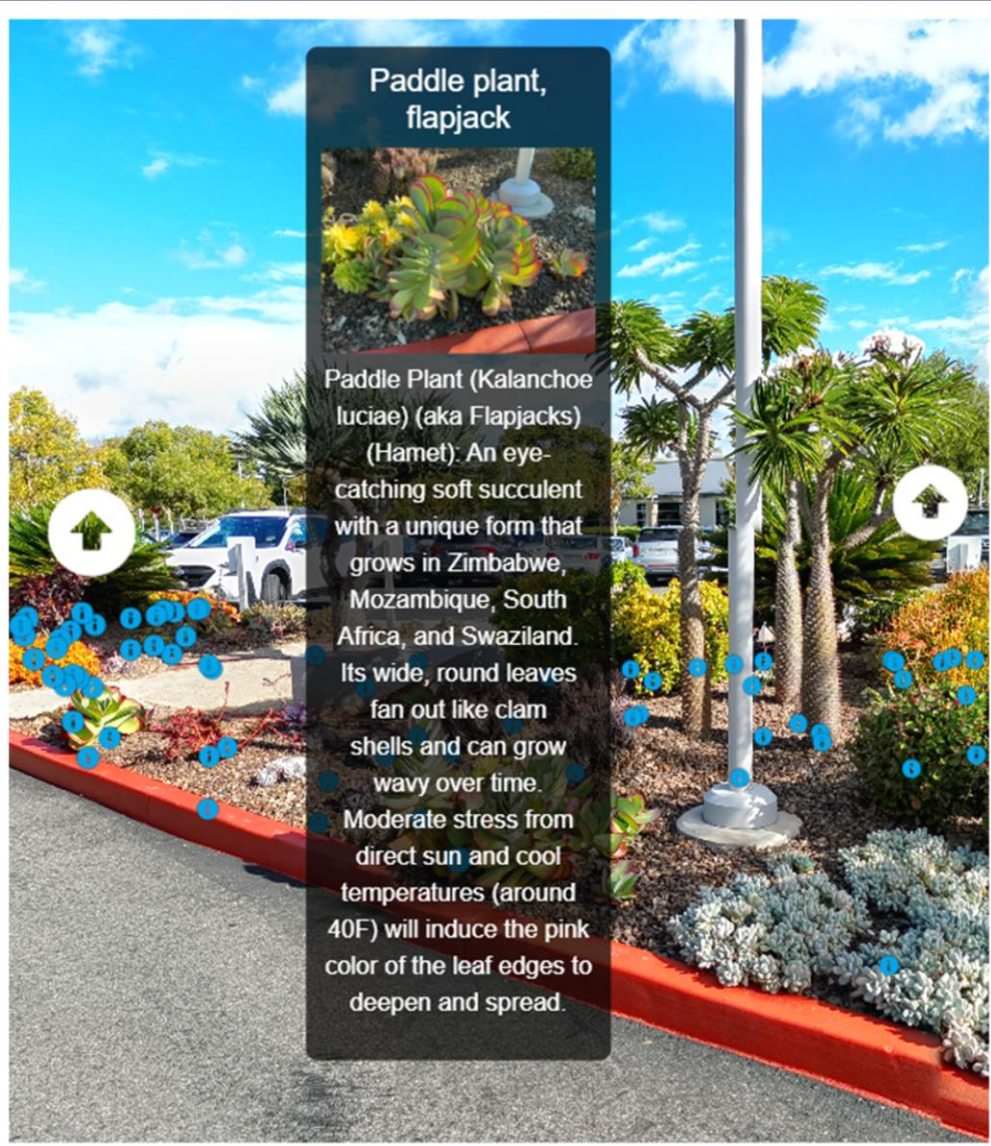
LOG-A-LEAK REPORTS



LEVELING UP GARDENS

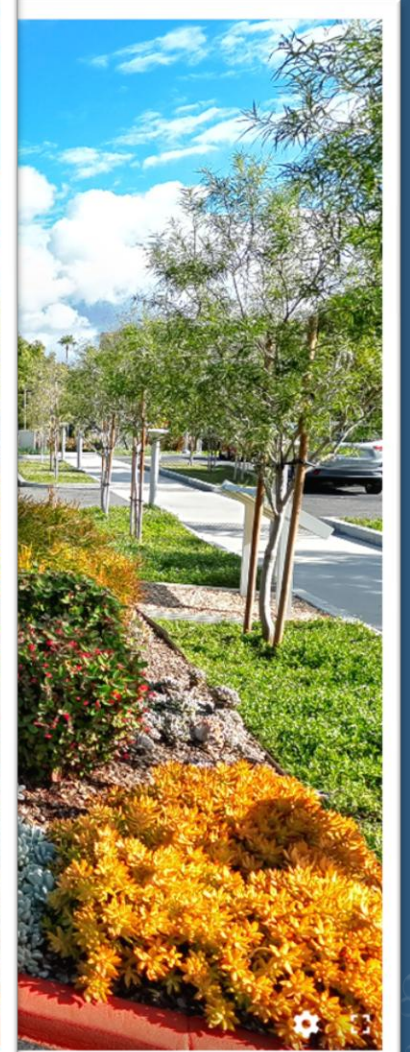


Esri, NASA, NGA, USGS, FEMA | Esri Community Maps Contributors, City of Irvine, County of Los Angeles, California State Parks, © OpenStreetMap contributors

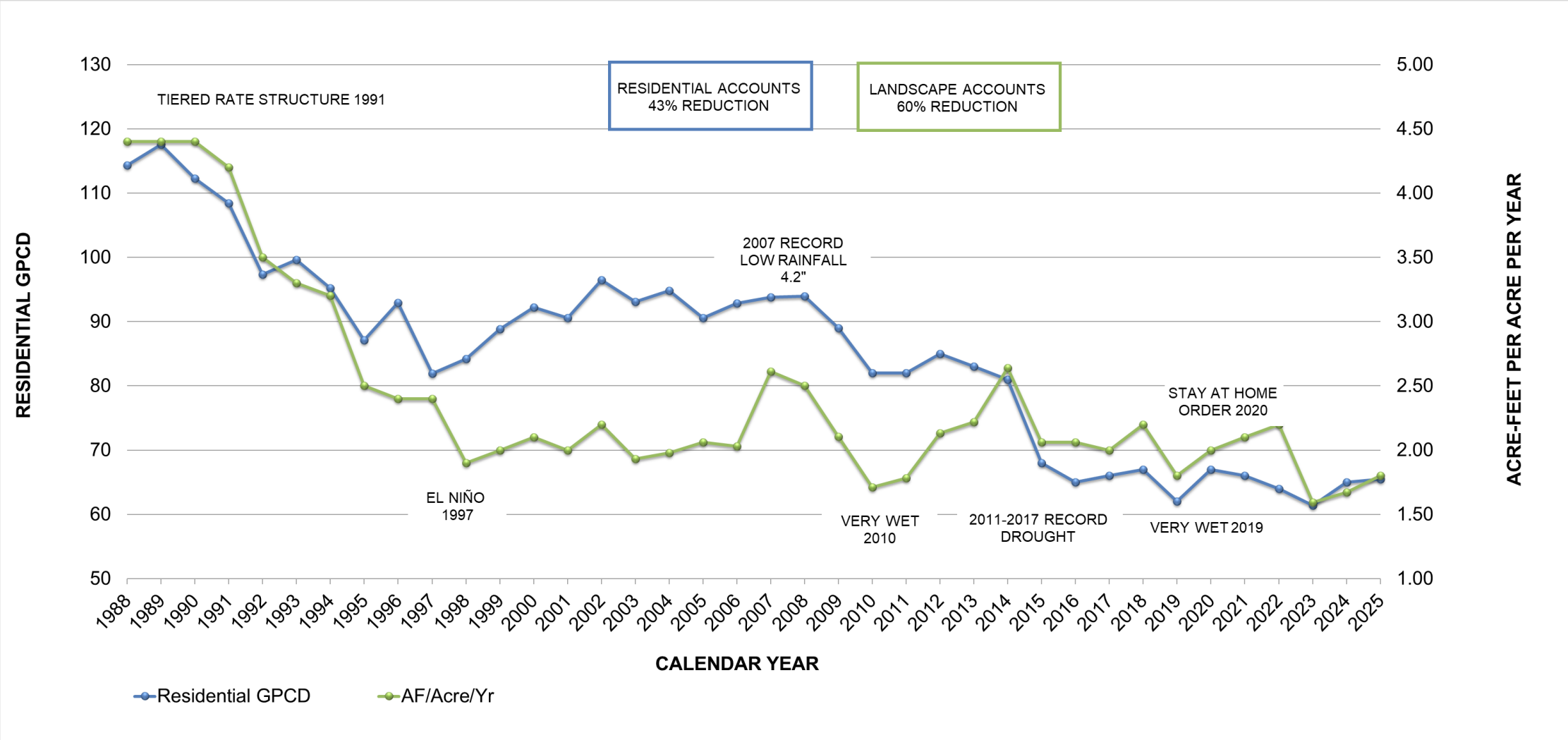


Paddle plant, flapjack

Paddle Plant (*Kalanchoe luciae*) (aka Flapjacks) (Hamet): An eye-catching soft succulent with a unique form that grows in Zimbabwe, Mozambique, South Africa, and Swaziland. Its wide, round leaves fan out like clam shells and can grow wavy over time. Moderate stress from direct sun and cool temperatures (around 40F) will induce the pink color of the leaf edges to deepen and spread.

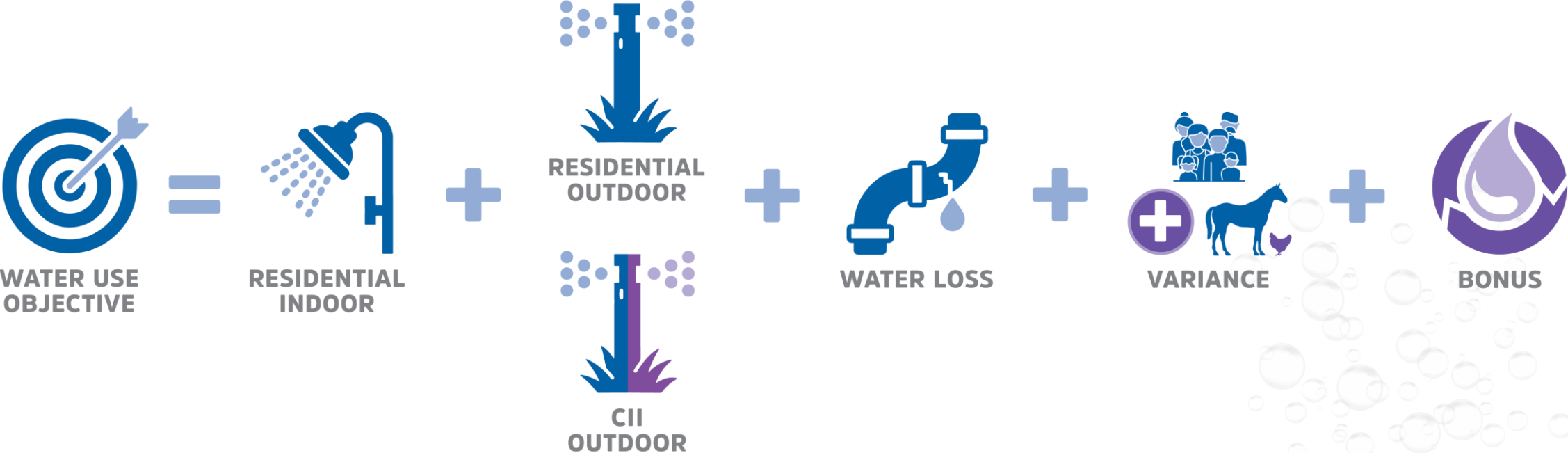


IRWD WATER USE TREND



IRWD RESULTS FOR FISCAL YEAR 2024-25

88% of Urban Water Use Objective



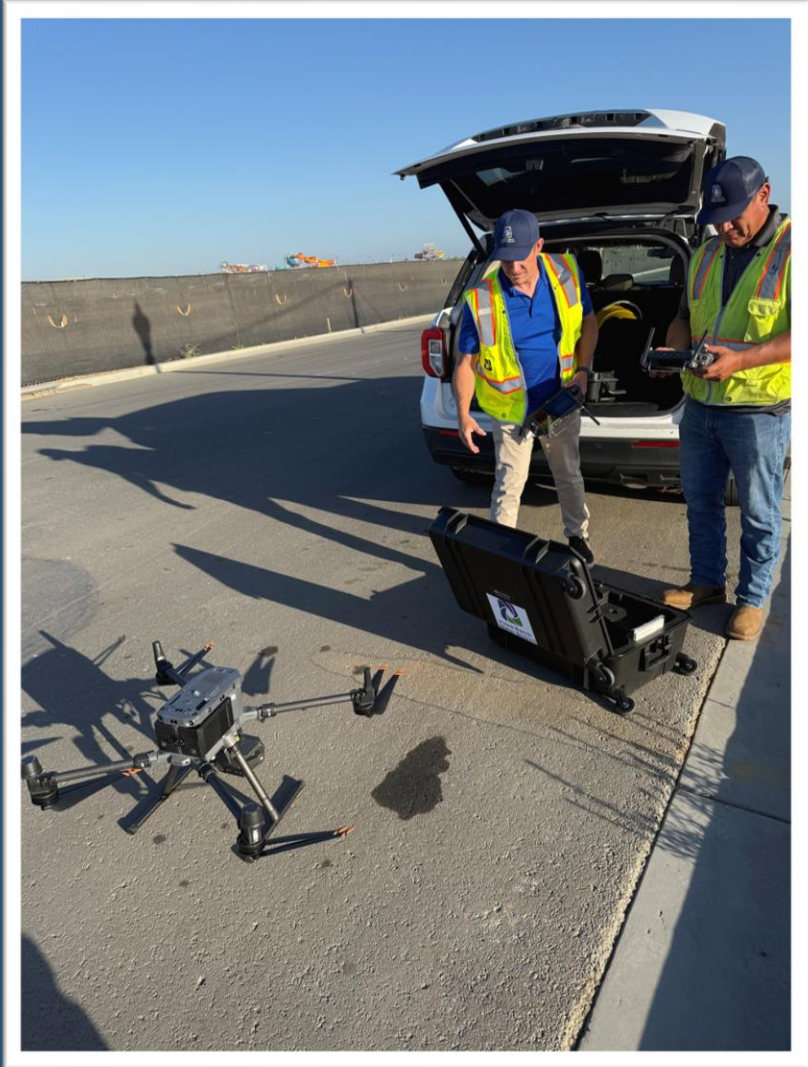
DIM Objective is equal to actual usage until 2028 when the DIM requirements become effective.

WATER LOSS PROGRAMS

- Proactive leak detection
 - Acoustic
 - Sensors
- Lifetime based meter replacement
- Performance based meter replacement
- Firelines with usage
 - Budget based rates effective July 2025
- Metered mainline flushing
 - Billing for excessive flushes
- Unauthorized connections

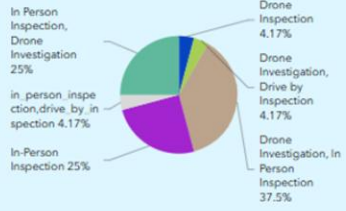


HARDWORKING DRONE

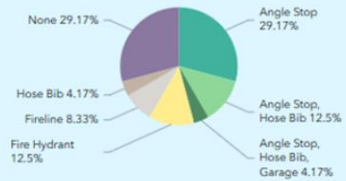


UNAUTHORIZED CONNECTIONS DASHBOARD

Types of Inspections Conducted



Types of Unauthorized Connections Found

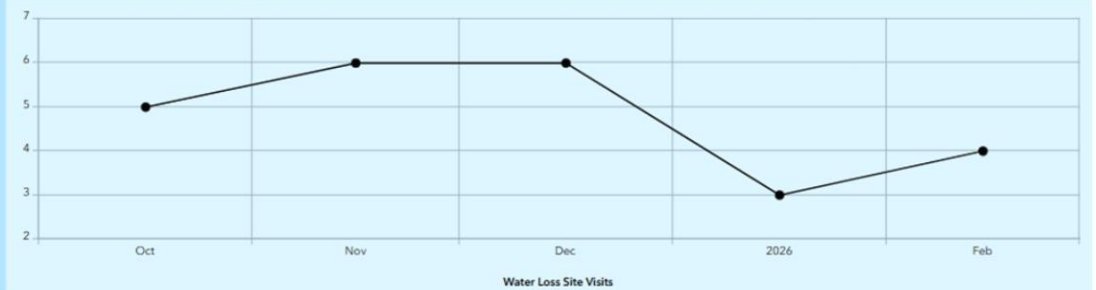


Reports Submitted

24

Warnings:

8



CUSTOMER COMMUNICATIONS

- IRWD Community Tours
- Community Events
- Educational Workshops
- Outreach Campaigns
 - Shed Show Series
 - Rebate Programs
- Customer Newsletters
 - Pipelines
 - The Dirt
- Social Media
- WaterSmart Reports
 - Leak Alert
 - Rain Alerts





The Shed Show

The Shed Show





yardtopia™

Find yourself outside.

WHEN 'TIME OUT' MEANS TIME OUTSIDE



STEP OUT INTO ZEN



UNPLUG AND CONNECT OUTSIDE



WELCOME TO IRVINE RANCH!



Fix a Leak Workshop 2026