



**YEARS**

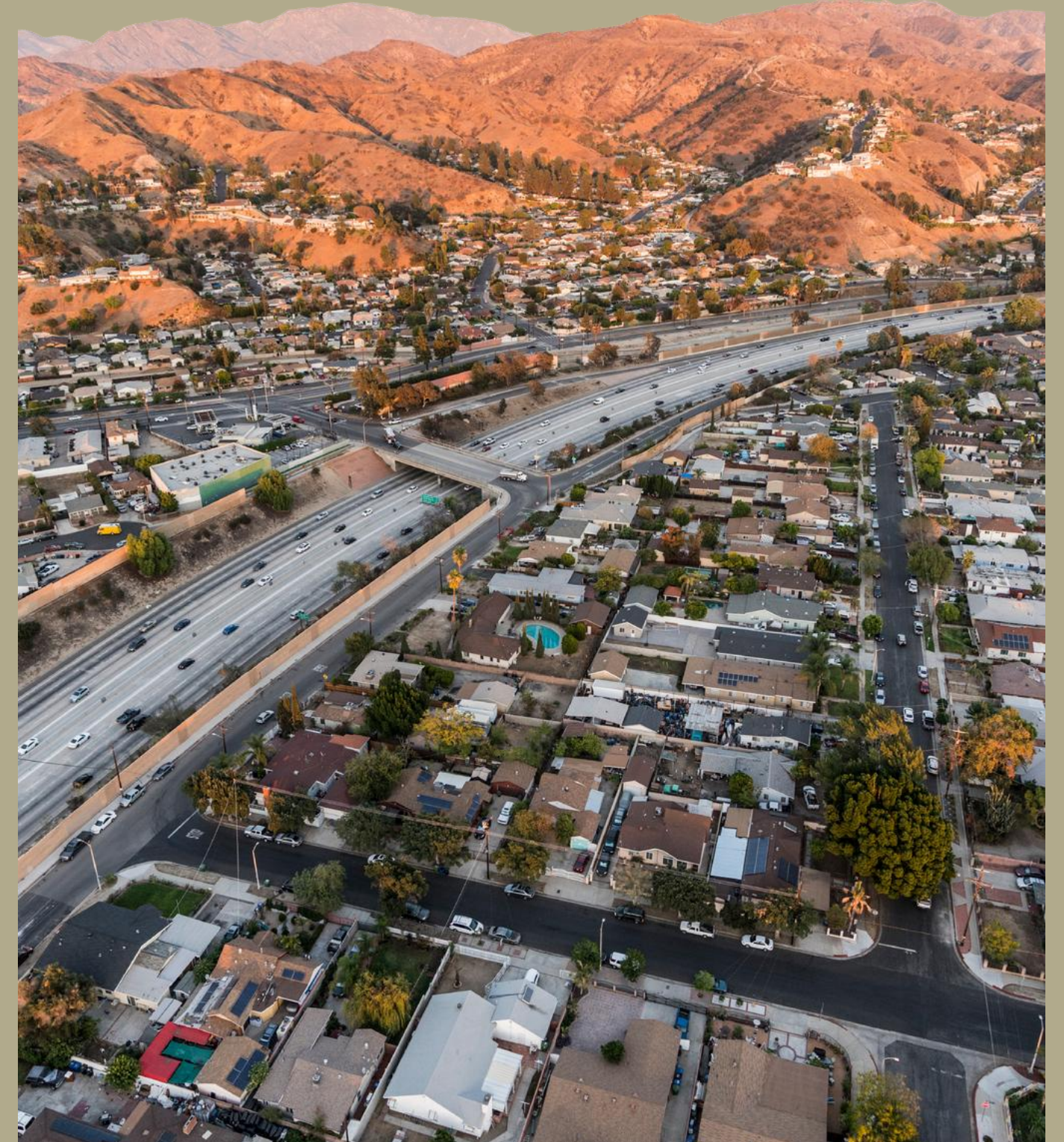
**CALIFORNIA  
DATA COLLABORATIVE**





# VISION & MISSION

Help water suppliers  
unlock, visualize and  
analyze data for resilient  
water management





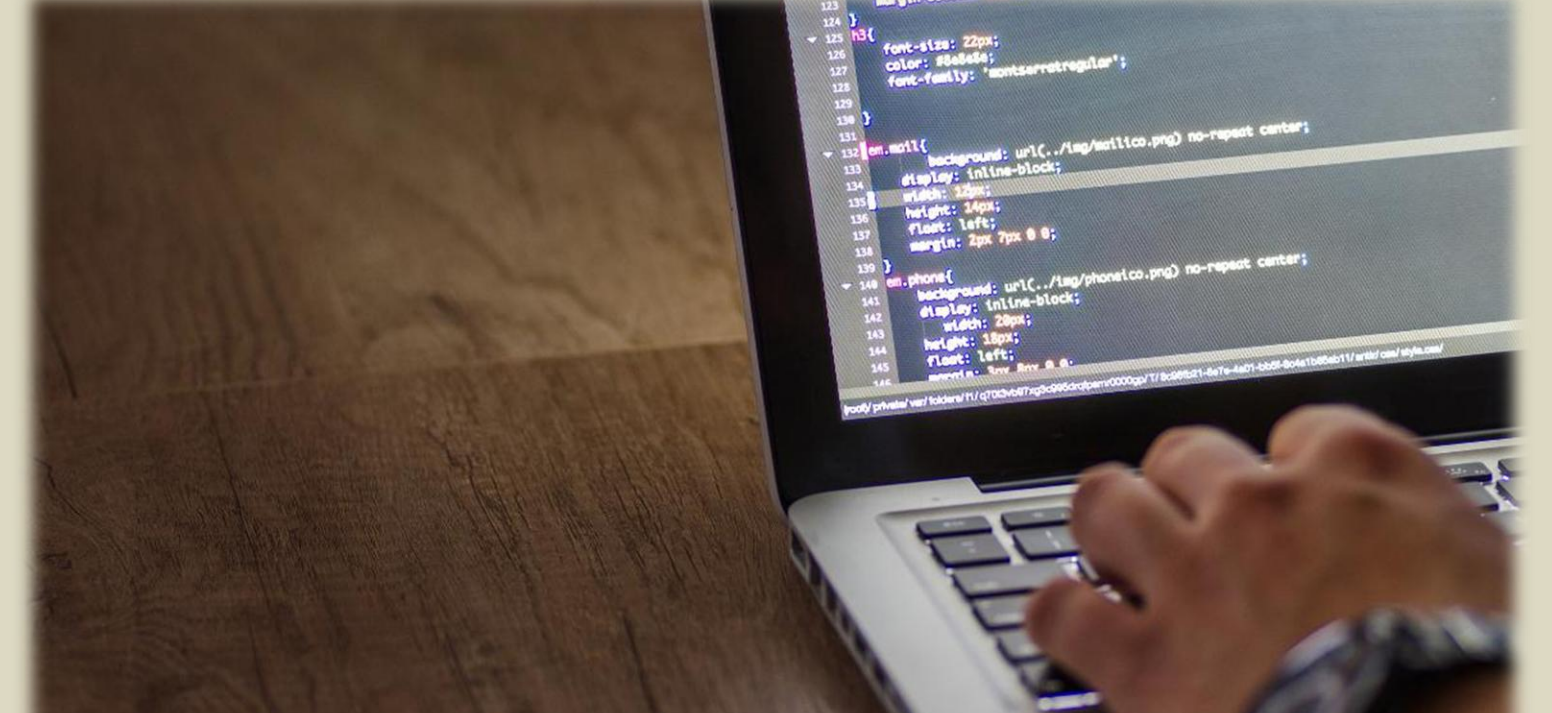
# OUR MEMBERS







## NETWORKING



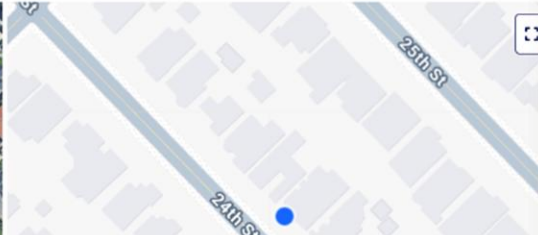


## DATA SCIENCE ON TAP

**Water Town Water District** Search Water Town Water District Data gap identified [Upload Data](#) Menu

[DASHBOARD](#) [CUSTOMERS](#) [REPORTS](#) [WATER USE OBJECTIVE](#) [SYNC DATA](#)

**Service ID: 67376-1**  
**2987 25TH ST, Watertown, 90402**  
Account #: 67376 APN: 4278006004 Rate code: SINGLE FAMILY Class: RES.SIN Assign to Segment: No segments assigned

**SOFTWARE & SUPPORT**

<b>12 Mo. Avg. Efficiency</b> Help <b>12 Mo. Avg. budget: - CCF</b> <b>12 Mo. Avg. usage: - CCF</b> <small>12 mo. avg. 5% budget</small>	<b>12 Mo. Avg. % of Bills Over Budget</b> ~%	<b>Household Income</b> Neighborhood Median: \$107,917	<b>Household Size</b> Provided: ~ ppl. Neighborhood Median: 2.64 ppl.	<b>Landscape Area</b> Provided: 0 sqft Estimated: ~	<b>DWR-LAM</b> Irrigable Area: 4388 sqft Non-Irrigable: 3476 sqft Improvement: 3476 sqft	<b>Building Age</b> Neighborhood Median: 85
---	---	--	--	---	---	---



## TRAINING & EDUCATION



## *Steering Committee*



**Chair**



**Vice Chair**



*Regional Data Solutions*



*Resiliency & Water Efficiency*



*Business Development*



*Workforce Development*

**NETWORKING  
COMMITTEES**

# COMMITTEE PROJECTS

## Committee Projects 2025



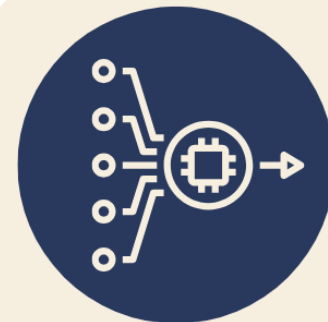
### State Regulatory Data Streamlining

Co-leading an initiative to standardize regulatory reporting requirements, eliminate reporting redundancies, and create a centralized reporting portal



### Data Governance & Standards

Knowledge sharing and trainings for all levels of staff to support effective and achievable data modernization projects.



### Pipeline, Automation, & Warehousing

Member driven discussions and resources to support data governance and standardization to support State regulatory reporting, compliance as well as internal operations optimization



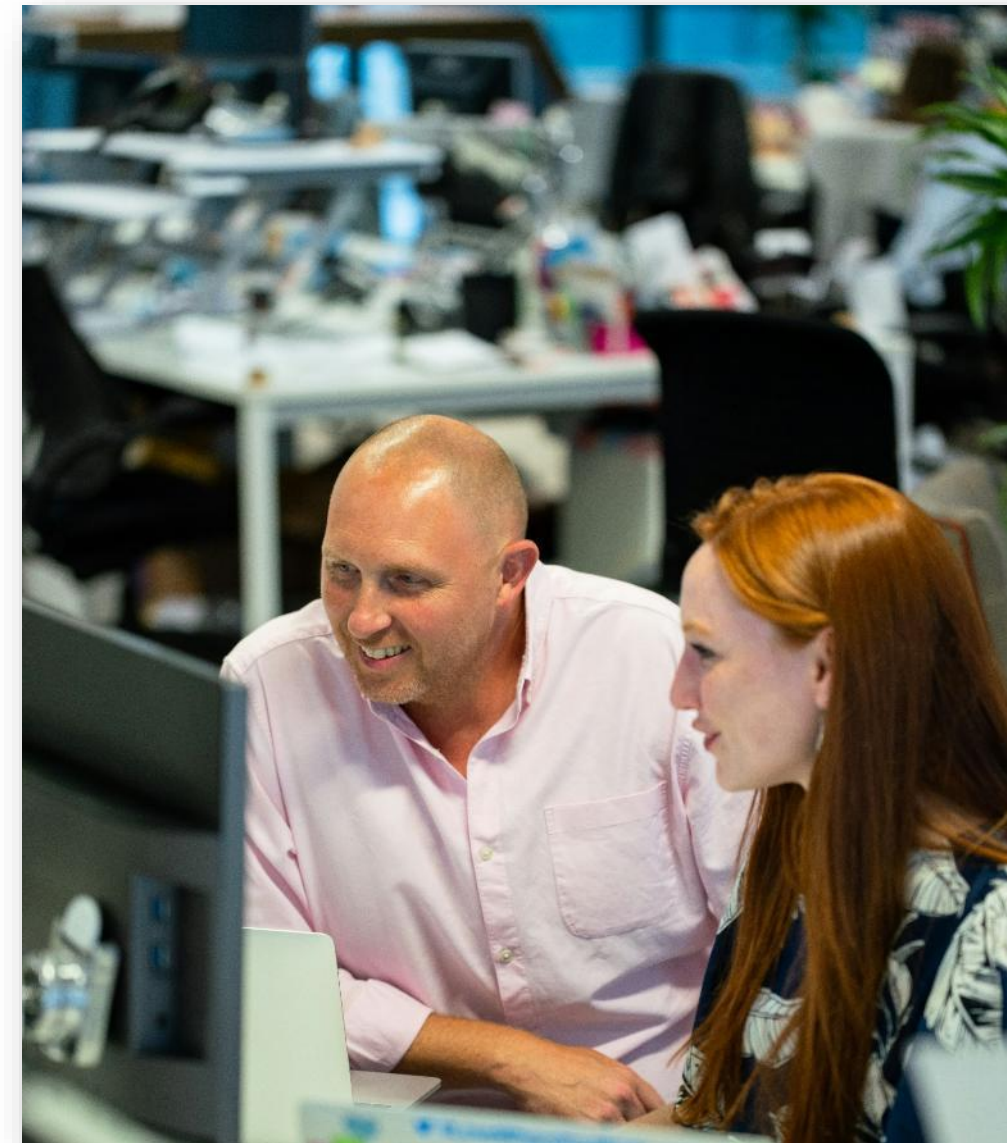
### Fellowship Program

Develop a fellowship program that places early-career technologists into interested members' agencies to tackle digital innovation and data analysis challenges



## Examples of Projects

- Perform analysis of water efficiency programs for UWUO compliance
- Inventory software systems
- Governance documentation
- Help with data standardization
- Support streamlining regulatory reporting
- Work on data automation
- Tackle those back burner data analytics projects
- Vet and Implement AI opportunities

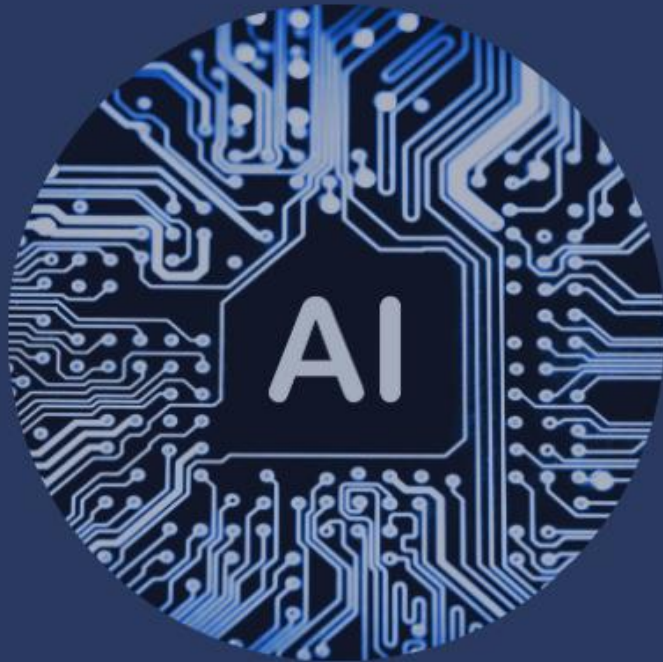




## AI FOR WATER MANAGEMENT

Online Course

- ✓ 6-week course
- ✓ Taught by AI Water Industry Experts
- ✓ Create an AI Playbook



*Classes start January 27, 2026*

## DATA MODERNIZATION

Online Courses

- ✓ Data literacy
- ✓ Data Governance
- ✓ Dashboarding - Microsoft Tools



*Courses start mid-2026*

## AMI ROUNDTABLES

Vitural/In-person

- ✓ Best Practices & Pitfallst
- ✓ Unlocking & Storing Data
- ✓ Analysis



*Starting February 2026*



Resource Library

- AMI
- Budget Based Rates
- Conservation
- Demand Forecasting
- Pipeline, Automation & W...
- RFP/RFQ Clearinghouse
- Weather Data
- Workforce
- Wavelet

← Back to Conservation



## Useful Resources on Water Saving Assumptions

🔖 Share ...

**YK** Yui Kurosawa **Admin** Oct 4, 2024  
Communications and Marketing @ CaDC

List of Water Savings Assumptions - download [here](#)

### Studies

2021.9.1\_Reversion.pdf  
[https://drive.google.com/file/d/1HLY\\_ftmkdPa27Xy83lrkNg8jcGRoIn-W/view?usp=drive\\_link](https://drive.google.com/file/d/1HLY_ftmkdPa27Xy83lrkNg8jcGRoIn-W/view?usp=drive_link) 2021.9.1\_Reversion.n

EDUCATION & UPSKILLING  
LIBRARY OF RESOURCES



# DATA SCIENCE ON TAP Example

## AUTOMATED IRRIGATION VIOLATIONS

### AMI Project

- ✓ Algorithm to identify irrigation during prohibited hours and days
- ✓ List of violations





# ANALYSIS Example

## CII MIXED-USE METER IRRIGATION ESTIMATES

AI + AMI  
Project

- ✓ ML Model Using AMI to Detect Irrigation in Mixed-Use Meters
- ✓ Support UWUO Compliance







**WAVELET**  
BUILT BY MEMBERS FOR MEMBERS



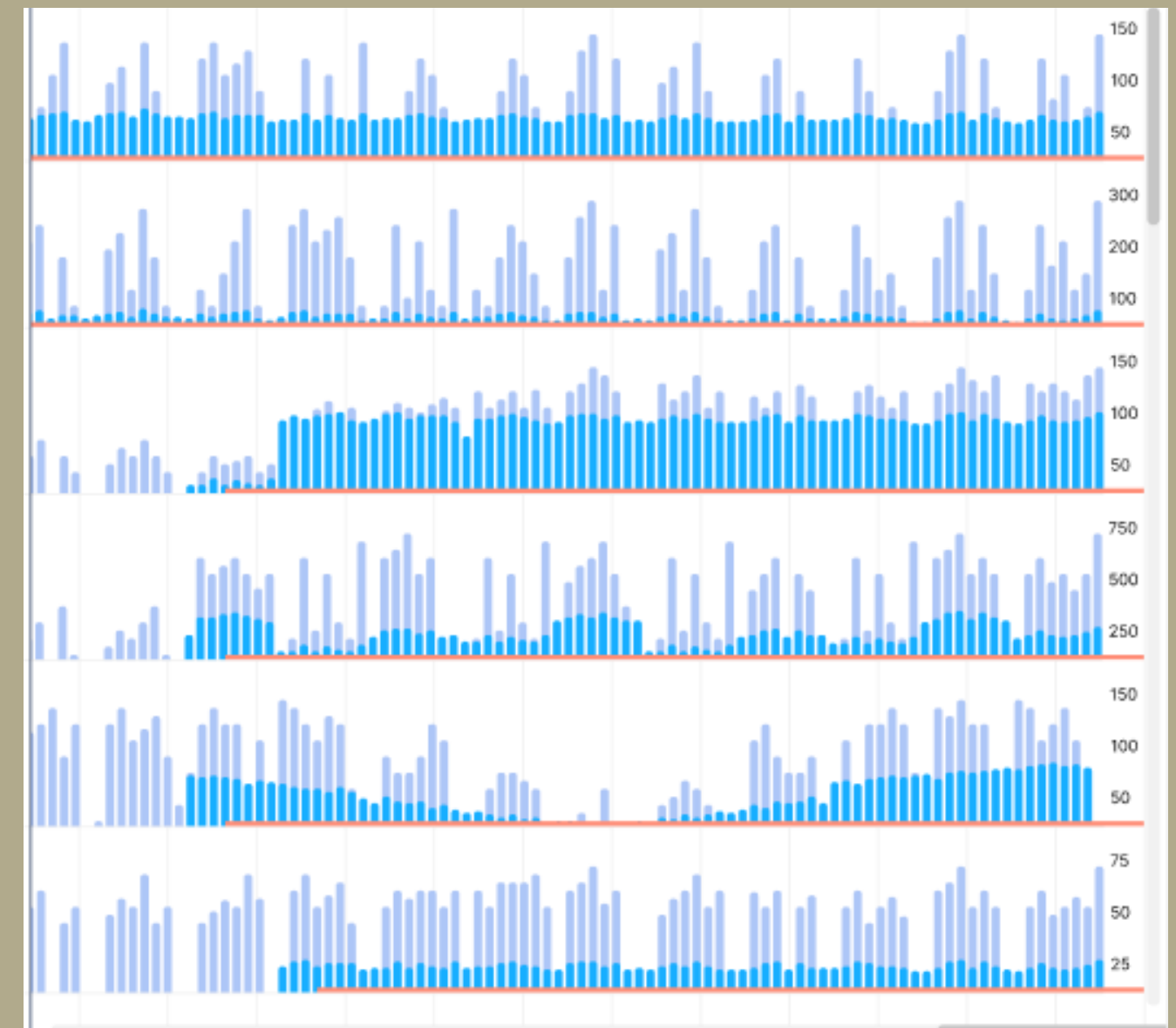
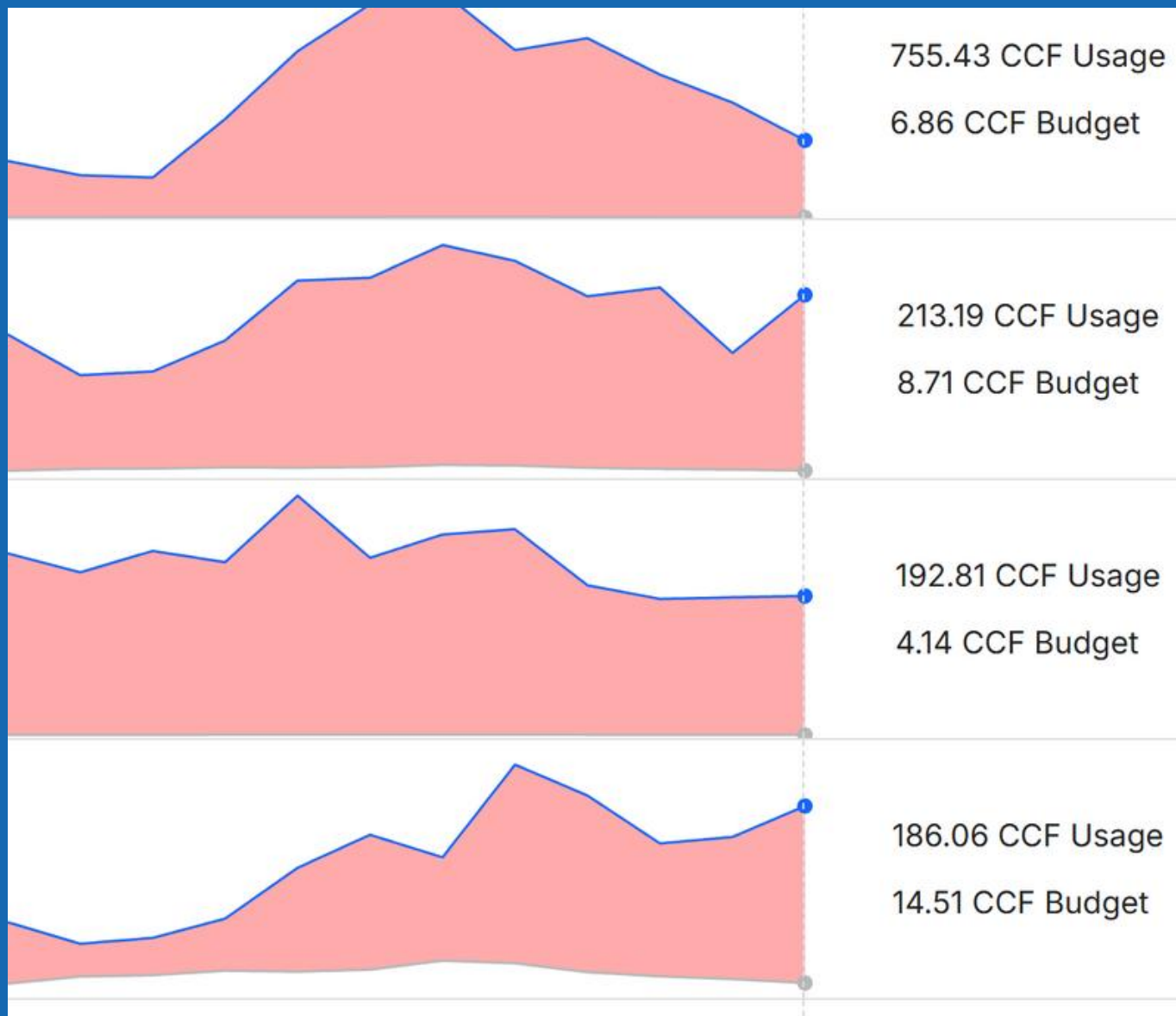
# WAVELET

Unlocks, displays and analyzes your data

## BILLED WATER USE



## AMI





# WAVELET

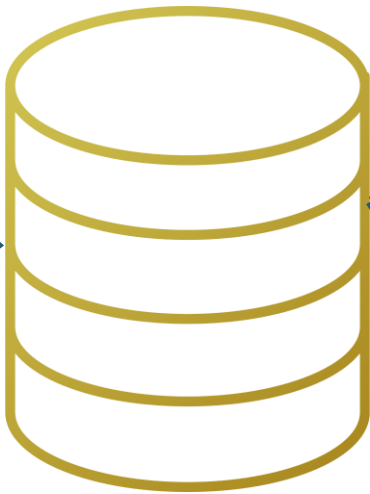
## AMI Connect

Wavelet

### AMI Vendors



### Warehouse



Adaptors

SCV Data

Search

Dashboard

Accounts

Reports

Segments

Water Use Objective

Upload Data

Agency Profile

Users

Manage Agencies

Logout

539 Accounts with Irrigation Events

OVERVIEW OF IRRIGATION

TABLE OF IRRIGATION

MAP OF IRRIGATION

FOR REVIEW (22) EMAIL SENT (18) LETTER SENT (28) PHONE CALL (12) SITE VISIT (12) RESOLVED (78) HIDDEN (10)

as of Monday 5/12/2025 @ 9am Usage Irrigation Bud

Filter by Class

Residential

Single Family Residential

Multi-Family Residential

Commercial, Industrial & Institutional

Irrigation

Filter by Irrigation Profile

Exceeds Monthly Outdoor Budget

Minimum Irrigation Volume

50+ Gallons/ Hr

Irrigation Days

Mon, Wed, Fri

Irrigation Times

10am - 4pm

Min. Weekly Irrigation Frequency

1

Account #11020

23931 Stillwater Ln SFR

added 5/14/2025

3,725 Gal.

2,980 Gal.

744GPH

Mon

3am

Account #11020

23931 Stillwater Ln SFR

added 5/14/2025

25,032 Gal.

6,258 Gal.

1,043GPH

Mon

11pm

Account #11020

23931 Stillwater Ln SFR

added 5/14/2025

7,393 Gal.

9,500 Gal.

72GPH

Mon

1pm

Account #11020

23931 Stillwater Ln SFR

added 5/14/2025

2,767 Gal.

1,495 Gal.

52GPH

Mon

2pm

Account #11020

23931 Stillwater Ln SFR

added 5/14/2025

3,989 Gal.

2,718 Gal.

65GPH

Mon

12pm

Account #11020

23931 Stillwater Ln SFR

added 5/14/2025

4,576 Gal.

3,378 Gal.

72GPH

Mon

11am

SCV Data

Search

Dashboard

Accounts

Reports

Segments

Water Use Objective

Upload Data

Agency Profile

Users

Manage Agencies

Logout

539 Accounts with Leak Events

OVERVIEW OF LEAKS

TABLE OF LEAKS

MAP OF LEAKS

FOR REVIEW (22) EMAIL SENT (18) LETTER SENT (28) PHONE CALL (12) SITE VISIT (12) RESOLVED (78) HIDDEN (10)

as of Monday 5/12/2025 @ 9am Usage

Filter by Class

Residential

Single Family Residential

Multi-Family Residential

Commercial, Industrial & Institutional

Irrigation

Filter by Status

Active Leaks

Resolved Leaks

Filter by Leak Profile

Minimum Leak Rate

10+ Gallons/ Hr

Minimum Leak Duration

7+ Days

Min. Percent Increase vs Average Usage

25%+ Increase

Account #11020

23931 Stillwater Ln SFR

added 5/14/2025

121 GPH

28 Days

100K+ Gal.

Account #11020

23931 Stillwater Ln SFR

added 5/14/2025

98 GPH

21 Days

20K+ Gal.

Account #11020

23931 Stillwater Ln SFR

added 5/14/2025

77 GPH

11 Days

45K+ Gal.

Account #11020

23931 Stillwater Ln SFR

added 5/14/2025

59 GPH

10 Days

57K+ Gal.

Account #11020

23931 Stillwater Ln SFR

added 5/14/2025

47 GPH

10 Days

79K+ Gal.

Account #11020

23931 Stillwater Ln SFR

added 5/14/2025

28 GPH

9 Days

21K+ Gal.





# WAVELET

## Core Features

- ✓ **Advanced Customer Support**
- ✓ **Comprehensive Data Integration**
- ✓ **Water Consumption Analysis**
- ✓ **Conservation Framework Compliance**
- ✓ **Automated Reporting**
- ✓ **Regular Updates**



# WAVELET

## Customer Support



### Advanced Customer Support

- Data onboarding calls
- Detailed data integration instructions
- Help button
- Quick response






# WAVELET

## Data Integration

### ✓ Comprehensive Data Integration

- Billed consumption data
- AMI data
- Aerial imagery
- Mapping capabilities
- Demographic insights
- Parcel data
- Landscape area measurements
- Customer classifications
- ETo
- Precipitation data
- UWUO standards & targets


**Water Town Water District**

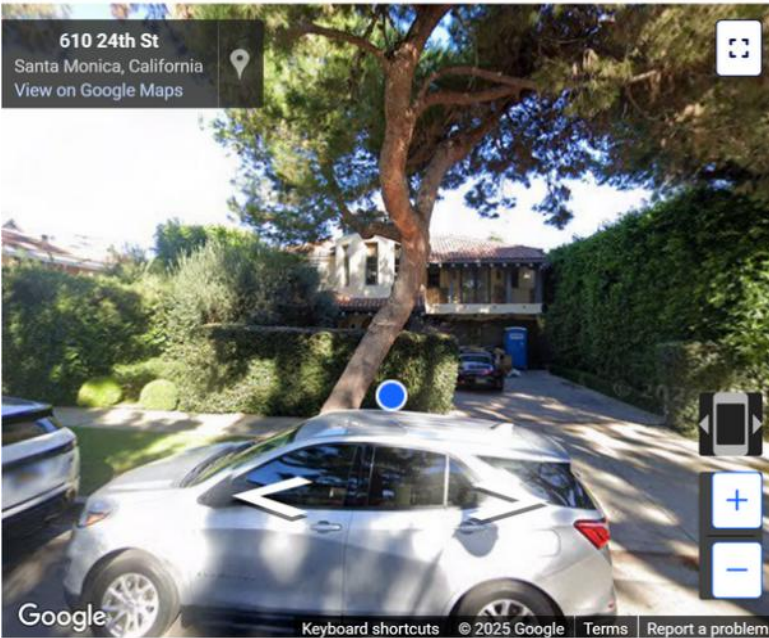
Water Town Water District
Data gap identified. Upload Data

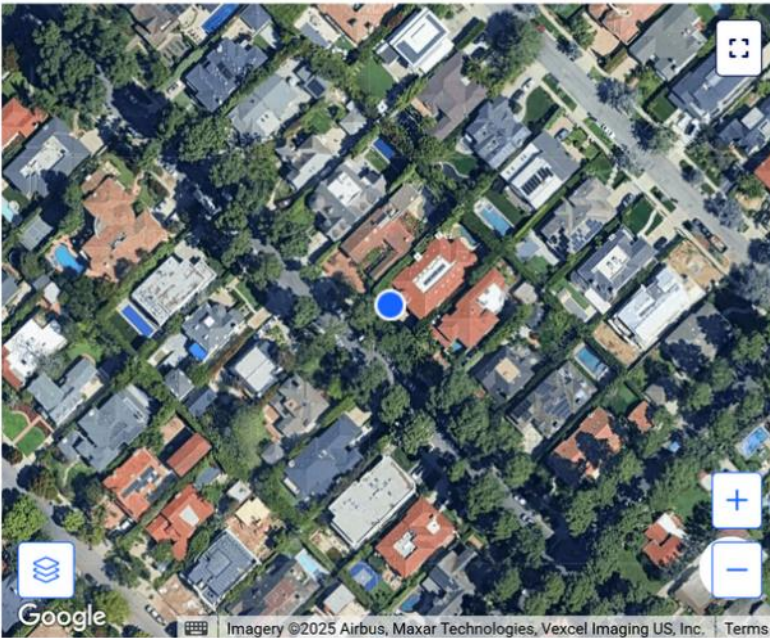
SERVICE ID: 07370-1

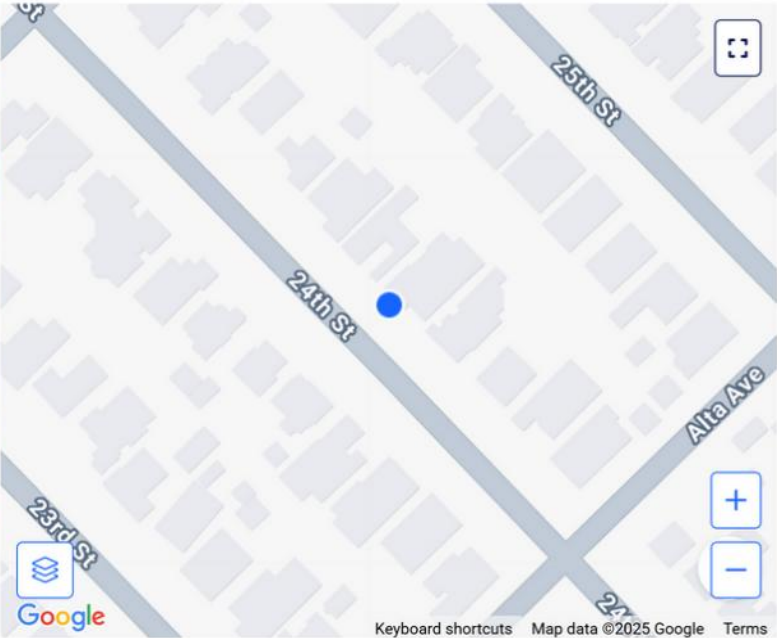
**2987 25TH ST, Watertown, 90402**

Account #: 67376   APN: 4278006004   Rate code: SINGLE FAMILY   Class: RES\_SIN   Assign to Segment: Turf Conversion Rebate Potential

610 24th St  
Santa Monica, California  
[View on Google Maps](#)







12 Mo. Avg. Efficiency

[Help](#)   avg. budget: - CCF

12 mo. avg. usage: - CCF

12 mo. avg. % budget

12 Mo. Avg. % of Bills

**Over Budget**

- %

Household Income

Neighborhood

Median: \$107,917

Household Size

Provided: - ppl.

Neighborhood

Median: 2.64 ppl.

Landscape Area

Provided:

0 sqft

Estimated:

DWR-LAM

Irrigable Area: 4388 sqft

Non-Irrigable: 3476 sqft

Imnervious: 3476 sqft

Building Age

Neighborhood

Median: 85

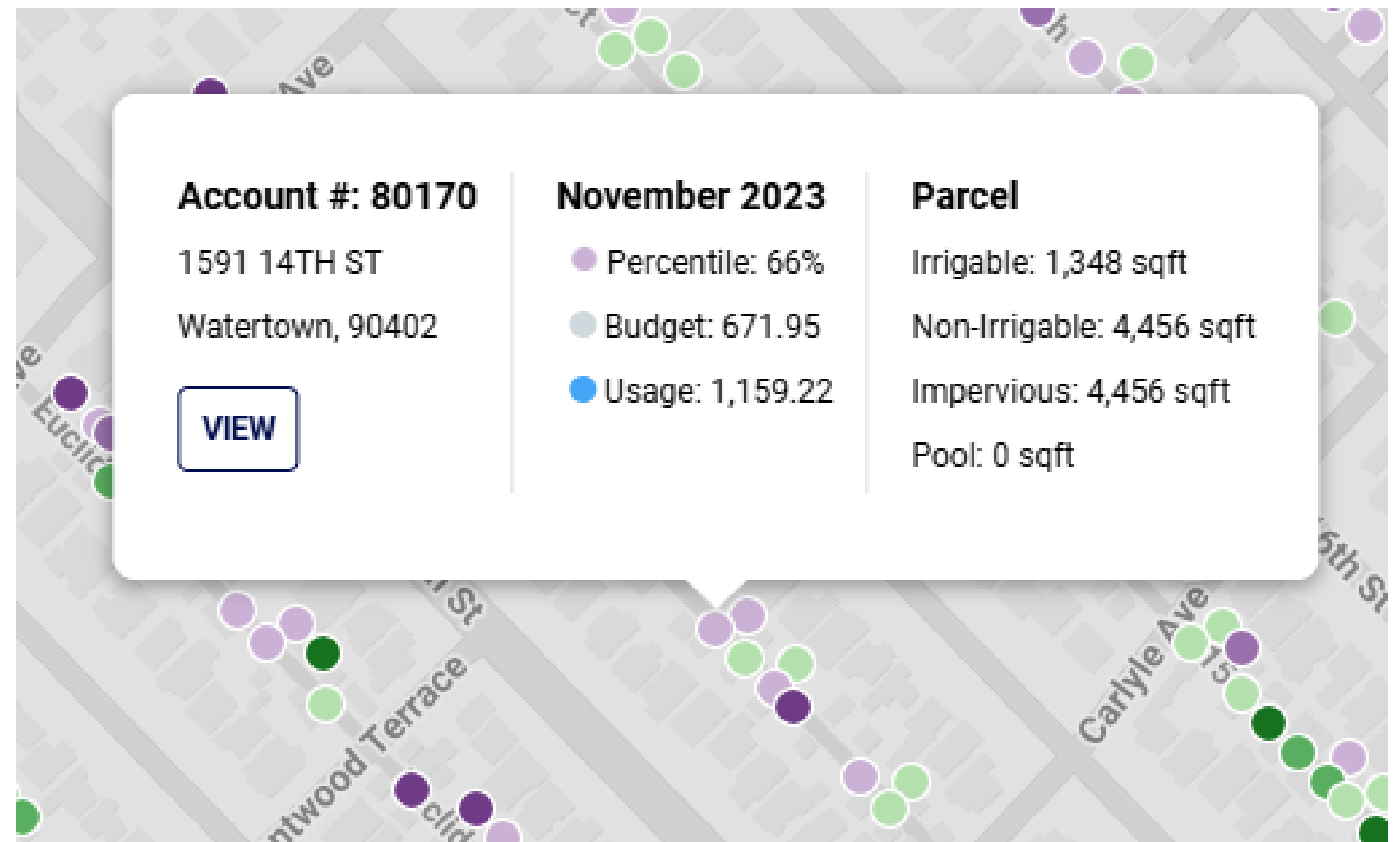
# WAVELET

## Core Features



### Water Consumption Analysis

- Consumption patterns: service wide & customer level
- Inefficient users (UWUO)
- Use compared to water budgets (UWUO)
- Customer segmentation (UWUO)
- Customer classifications (UWUO)





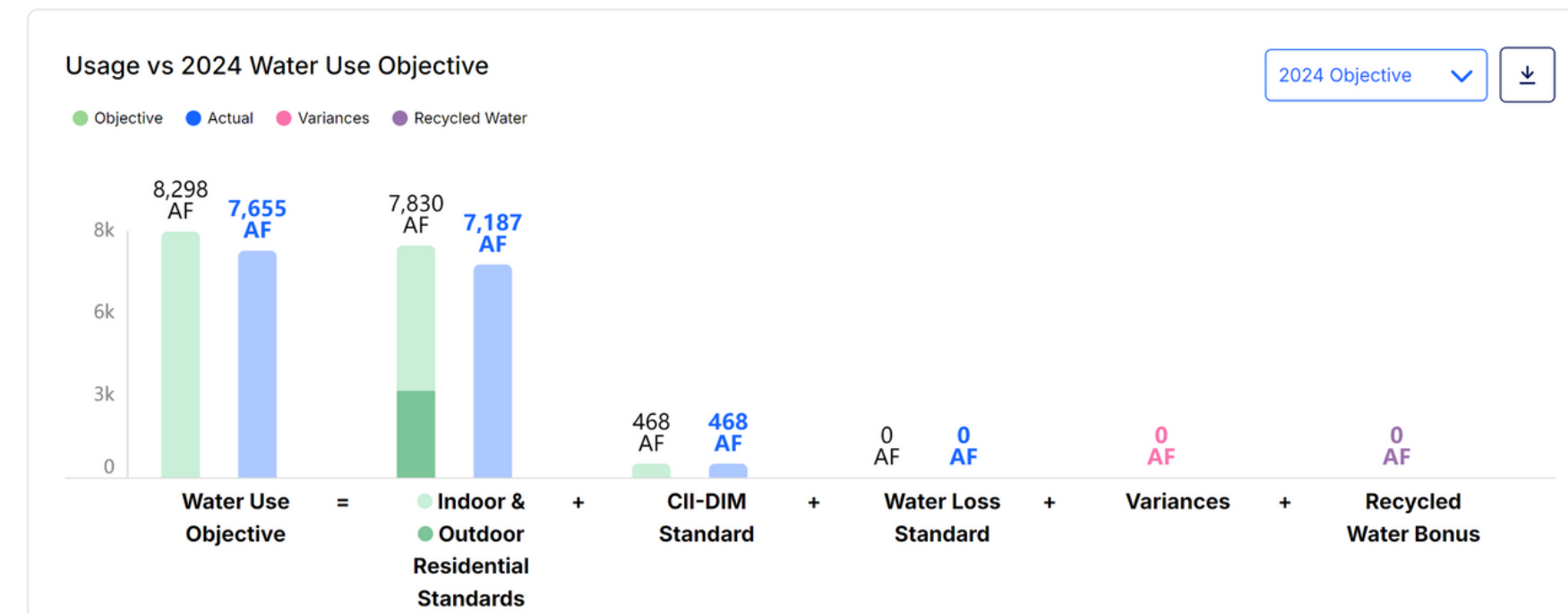
# WAVELET

## UWUO Compliance



## Conservation Framework Compliance

- UWUO Module to track actual use compared to each Standard
- Auto populates data for each Standard and Objective
- Provides automated list of inefficient customers for each Standard
- Regular meetings with Water Boards & DWR
- Webinars for compliance tools and tips



# WAVELET Reports



## Automated Reporting

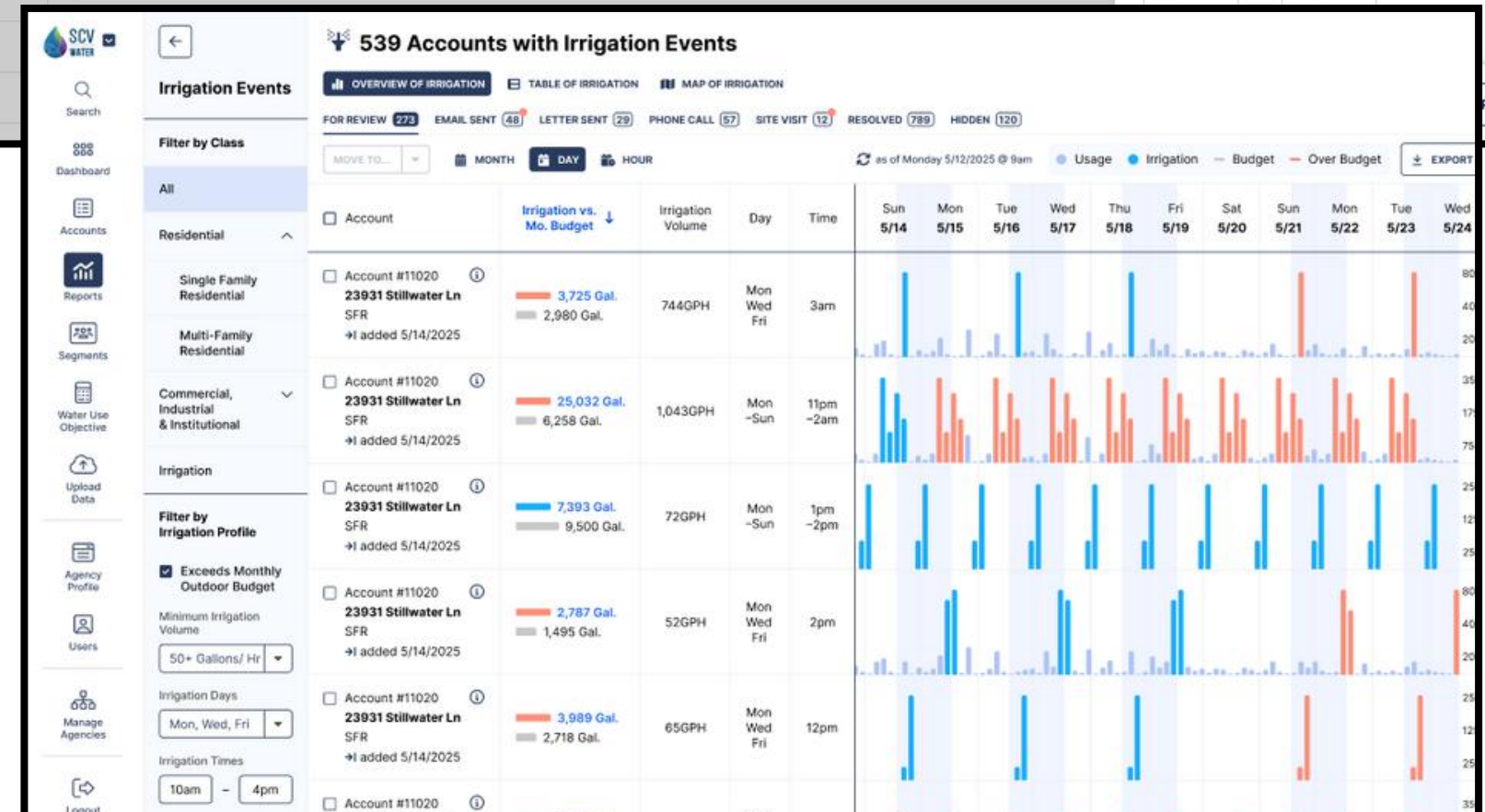
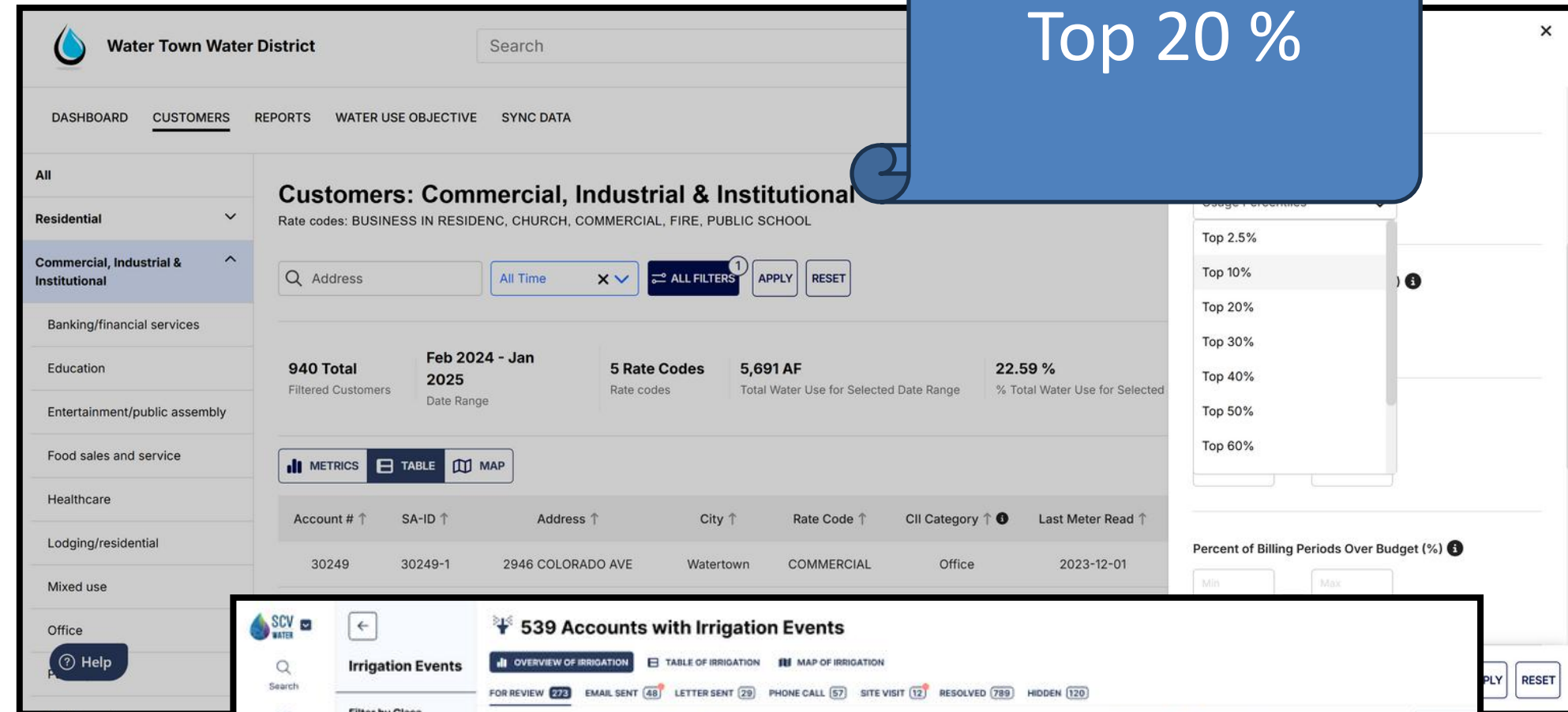
Billed Water Use Reports:

- Inefficient users
- Exceptions report (failing/failed meters)
- UWUO reporting
- Multiple filters and reporting options

AMI Reports:

- Leak alerts and leak estimates
- Irrigation on prohibited days

Top 2.5 %  
Top 20 %





## MEMBERSHIP Levels & Benefits

---



### Core Membership

- Free Wavelet + Core Support
- Steering Committee Seat
- Committees + Networking
- Unlimited webinars + workshops
- Members-only research + content



### Analytics Membership

- Core Benefits +
- Premium Wavelet + Advanced Customer Support
- Data Scientists on Tap



### AMI Membership

- Analytics Benefits +
  - AMI Storage + Support
  - Library of AMI Reports
  - 2 Customized AMI Reports/Year
-



## Membership Benefits & Dues FY25-26

### Retailer Membership

Tiers	Number of Connections/Meters						
Community	<15K	15K-24K	24K-40K	40K-70K	70K-100K	100-150K	>150K
<ul style="list-style-type: none"><li>Free Wavelet Software</li><li>Community News</li><li>Online Community Resources</li></ul>	FREE	FREE	FREE	FREE	FREE	FREE	FREE
Core	<15K	15K-24K	24K-40K	40K-70K	70K-100K	100-150K	>150K
<ul style="list-style-type: none"><li>Free Wavelet Software + Support</li><li>Steering Committee Seat</li><li>Networking + Committees</li><li>Data Summit + Webinars +</li><li>Member-only research + resources</li></ul>	\$4,500	\$6,000	\$8,000	\$12,000	\$15,000	\$18,000	\$21,000
Analytics	<15K	15K-24K	24K-40K	40K-70K	70K-100K	100-150K	>150K
<ul style="list-style-type: none"><li>Core benefits +</li><li>Premium Wavelet + Support</li><li>Data Science Support</li></ul>	\$7,800	\$11,000	\$11,400	\$25,000	\$26,000	\$36,200	\$51,200
AMI	<15K	15K-24K	24K-40K	40K-70K	70K-100K	100-150K	>150K
<ul style="list-style-type: none"><li>Analytics Benefits +</li><li>Unlimited AMI Storage</li><li>Library of AMI Reports</li><li>2 Customized Reports/Year</li></ul>	\$16,500	\$21,000	\$27,000	\$40,000	\$41,500	\$55,500	\$72,000

### Wholesaler Membership

Tier	Population		
Core + Analytics	< 1 Million	1-3 Million	> 3 Million
<ul style="list-style-type: none"><li>Steering Committee Seat</li><li>Networking + Committees Workshops</li><li>Member-only research + resources</li><li>Data Science Support</li></ul>	\$11,330	\$17,000	\$22,660





**CALIFORNIA  
DATA COLLABORATIVE**

## **CONTACT US**

### **EMAIL**

**outreach@thecadc.org**

### **WEB**

**www.thecadc.org**

### **ONLINE COMMUNITY**

**www.community.thecadc.org**

