



Taking Action to Reduce Non- Functional Turf

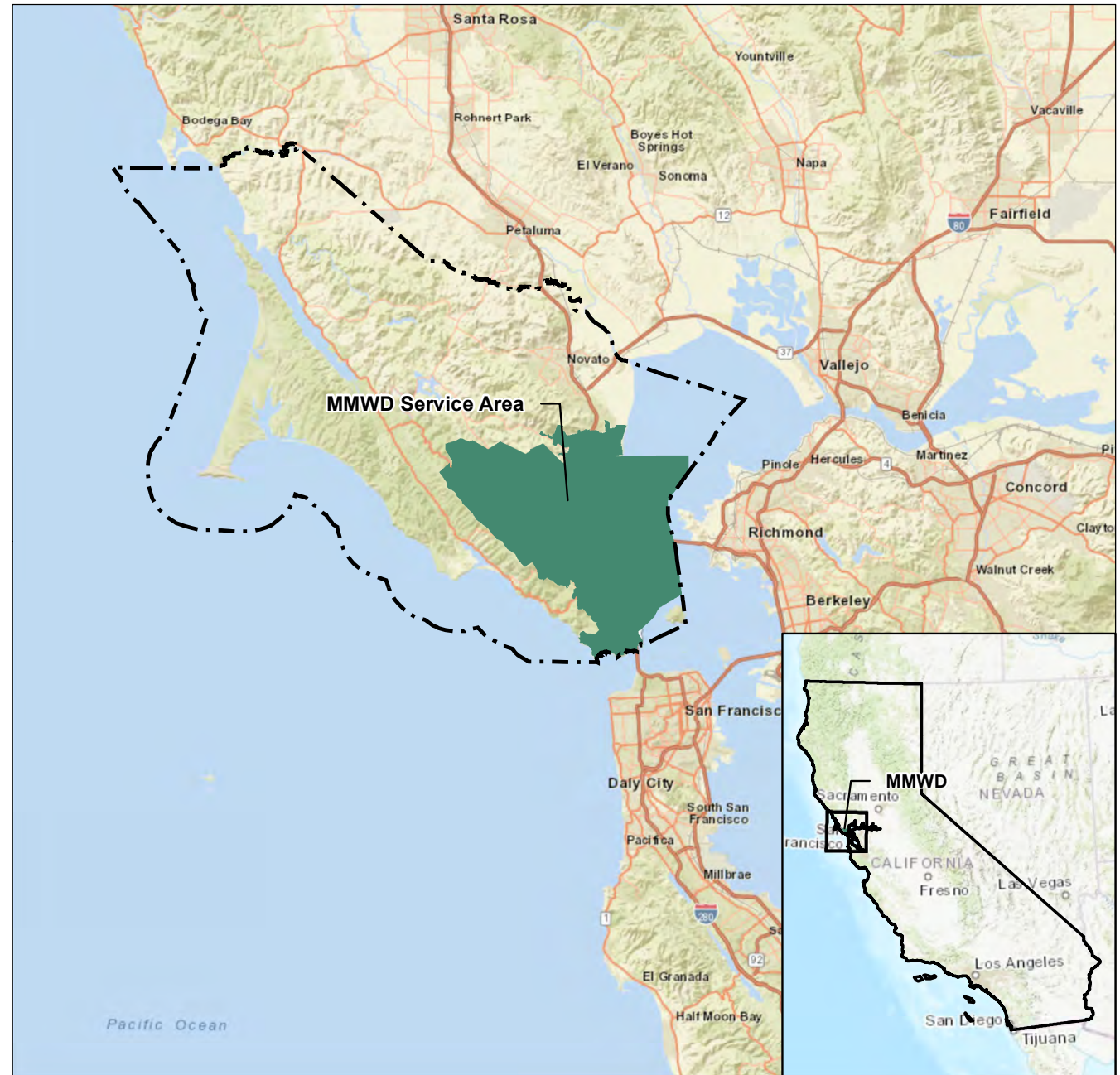
Carrie Pollard
capollard@marinwater.org

February 22, 2023



Overview

- About Marin Water
- Adoption of District Code preventing future installations
- Landscape Area Measurements of NFT
- Status of Targeted Marketing



Defining New Non-Functional Turf

Definition:

Non-Functional Turf: Any Turf planted within Non-Residential Landscapes, excluding Recreational Areas and other areas where the Turf is necessary for the intended function of the planted area and no alternative materials are suitable for the anticipated site use.

Existing Definitions:

- ***Non-Residential Landscape:*** *Landscapes in commercial, institutional, industrial and public settings that may have areas designated for recreation or public assembly. It also includes portions of common areas of common interest developments, such as home owners associations, with designated recreational areas. 13.02.021(2)(FFF)*
- ***Recreational Area:*** *Areas dedicated to active play or recreation such as sports fields, school yards, picnic grounds, or other areas with intense foot traffic, parks, sports fields and golf courses where turf provides a playing surface. 13.02.021(2) (SSS)*

Preventing Installations of NFT through Code Updates

- Ordinance 459: Non-Functional Turf irrigated with District water shall be prohibited.
- Revise 13.02.021 Water Conservation: Normal Year Water Conservation
 - Water Efficient Landscaping Section



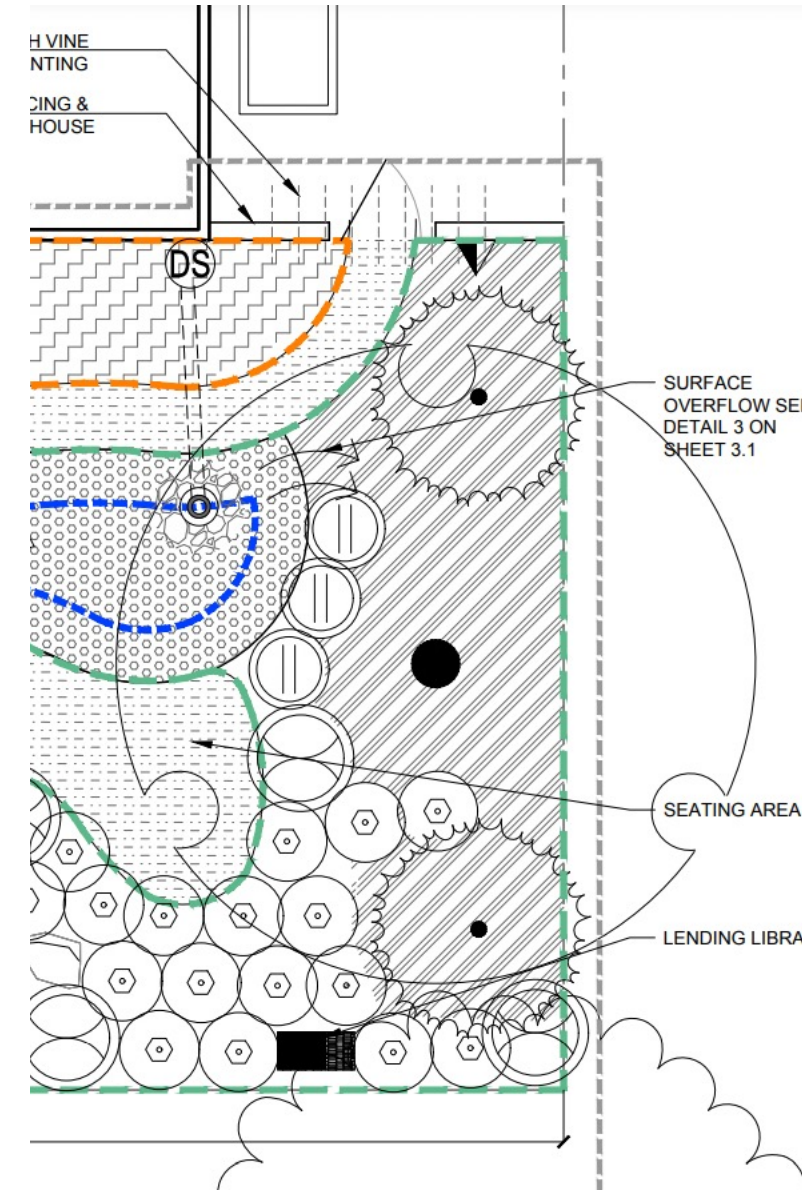
Applicability and Variance

Applicability aligns with Landscape Plan Review:

- New construction projects with an aggregate landscape area equal to or greater than 500 square feet requiring a building or landscape permit, plan check or design review.
- Rehabilitated landscape projects with an aggregate landscape area equal to or greater than 1,000 square feet requiring a building or landscape permit, plan check, or design review.

Variance Process:

- Allows for approval on a case-by-case basis



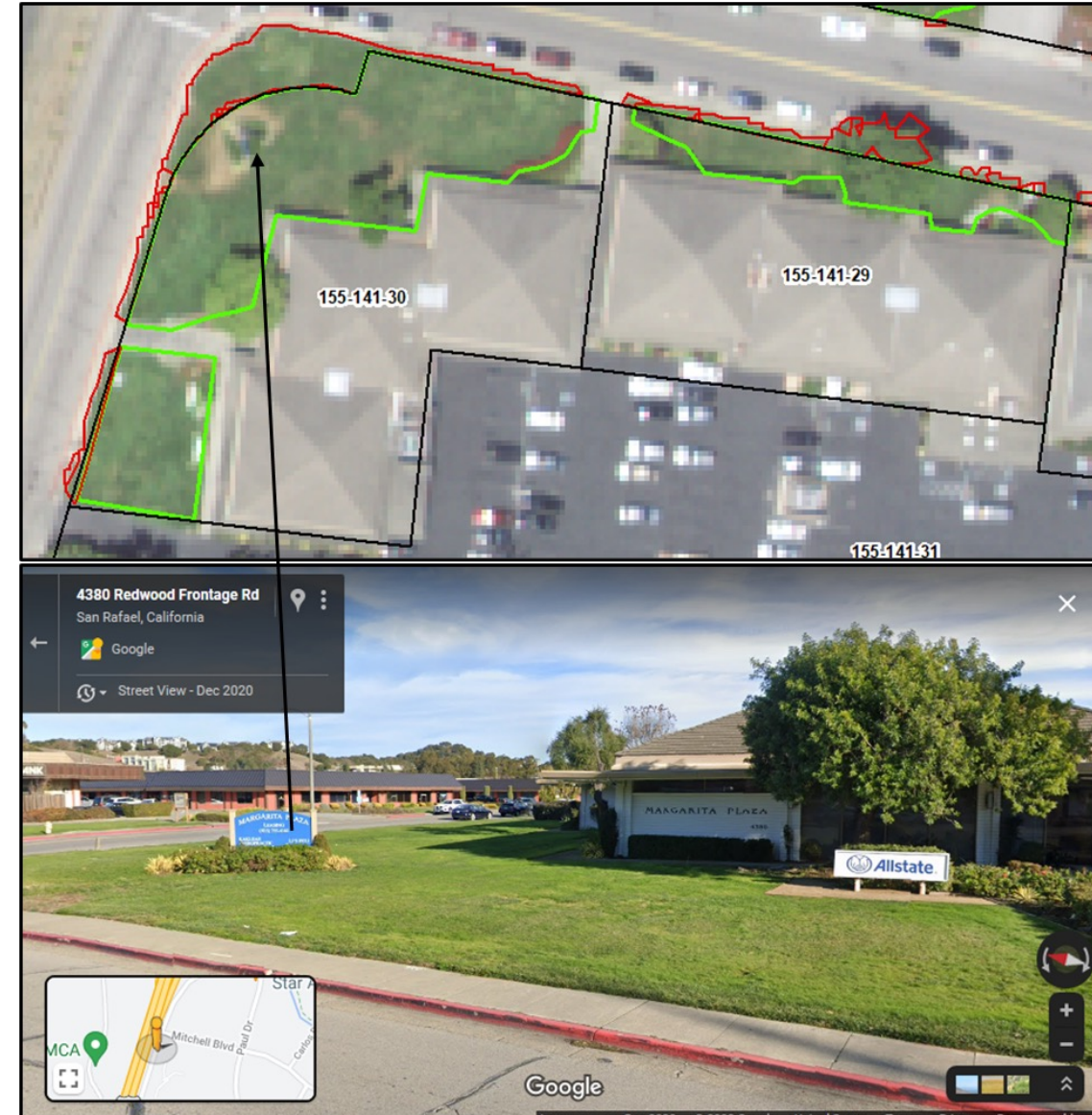
Defining Existing Non-Functional Turf

- Functional Turf: Irrigated lawn grass area that provides a recreational benefit to the community
 - 1,500 contiguous square feet or greater
 - more than 30 feet in all dimensions
 - located at least 10 feet from a street
 - installed on slopes less than 25%
 - and not installed within street medians, along streetscapes or at the front of entryways to commercial sites, neighborhoods or subdivisions



Evaluating Existing Non-Functional Turf

- Non-Residential NFT
 - 1,500,000sqft (~35 ac)
 - ~9% of total CII turf area
 - ~250 unique sites
- Actions taken to date to scrub the data
 - Filtered out NFT areas w/trees
 - Assigned polygons outside parcel boundary to adjacent parcel
- Next Steps
 - Encourage conversion through incentives post drought funding constraints





Taking Action to Reduce Non- Functional Turf

Carrie Pollard
capollard@marinwater.org

February 22, 2023

