

CalWEP2022 FALL PLENARY

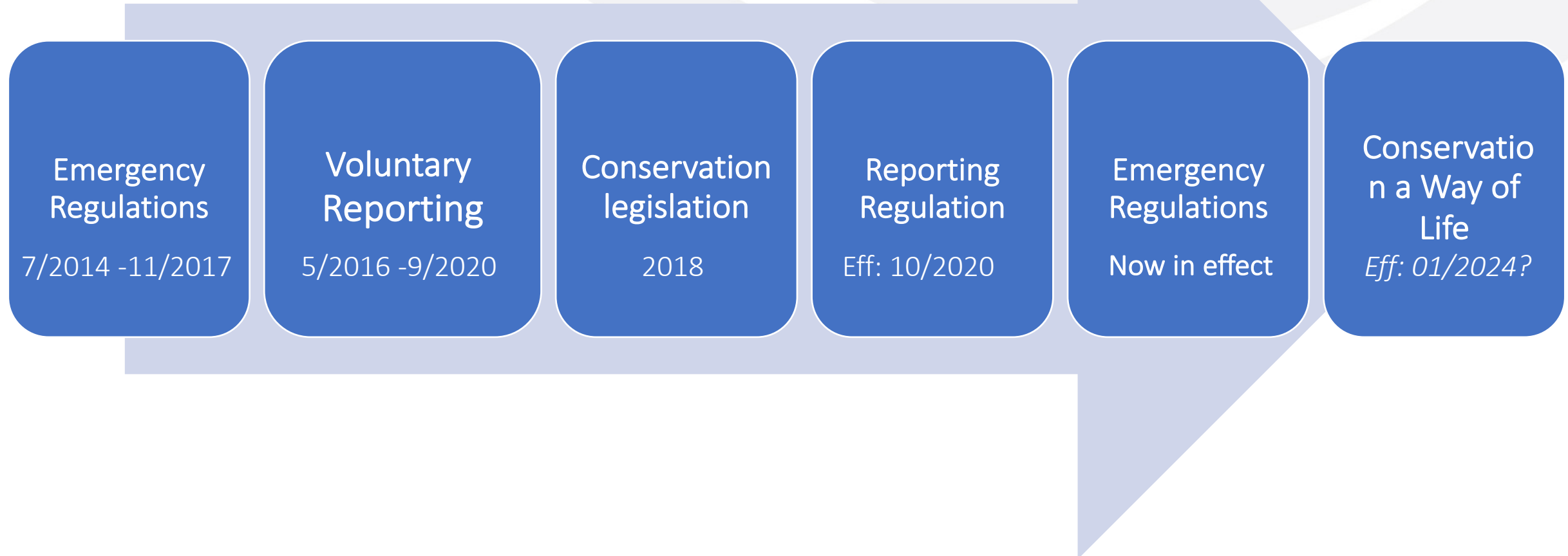
Charlotte Ely

Office of Research, Planning, and Performance



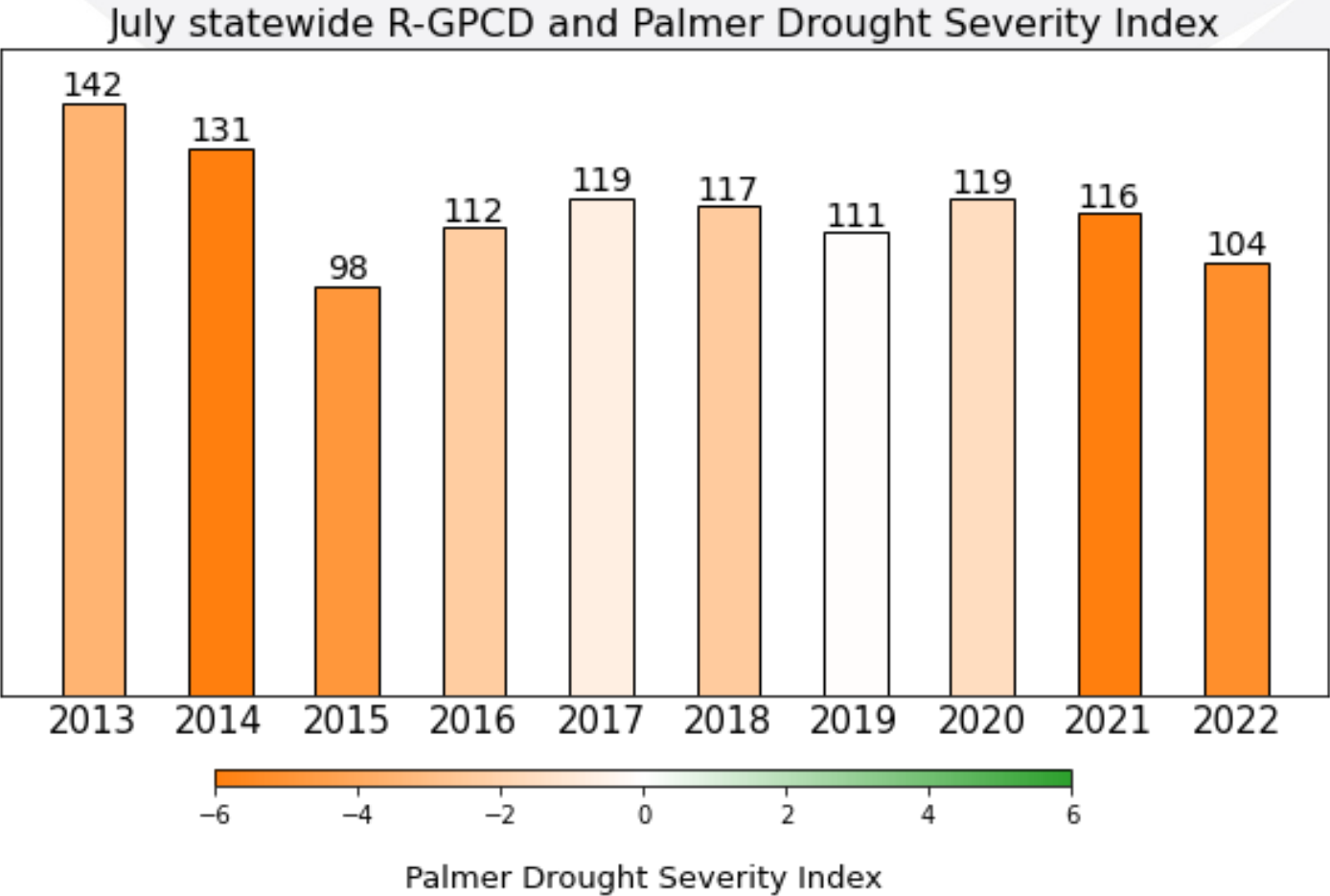
State Water Board

Background

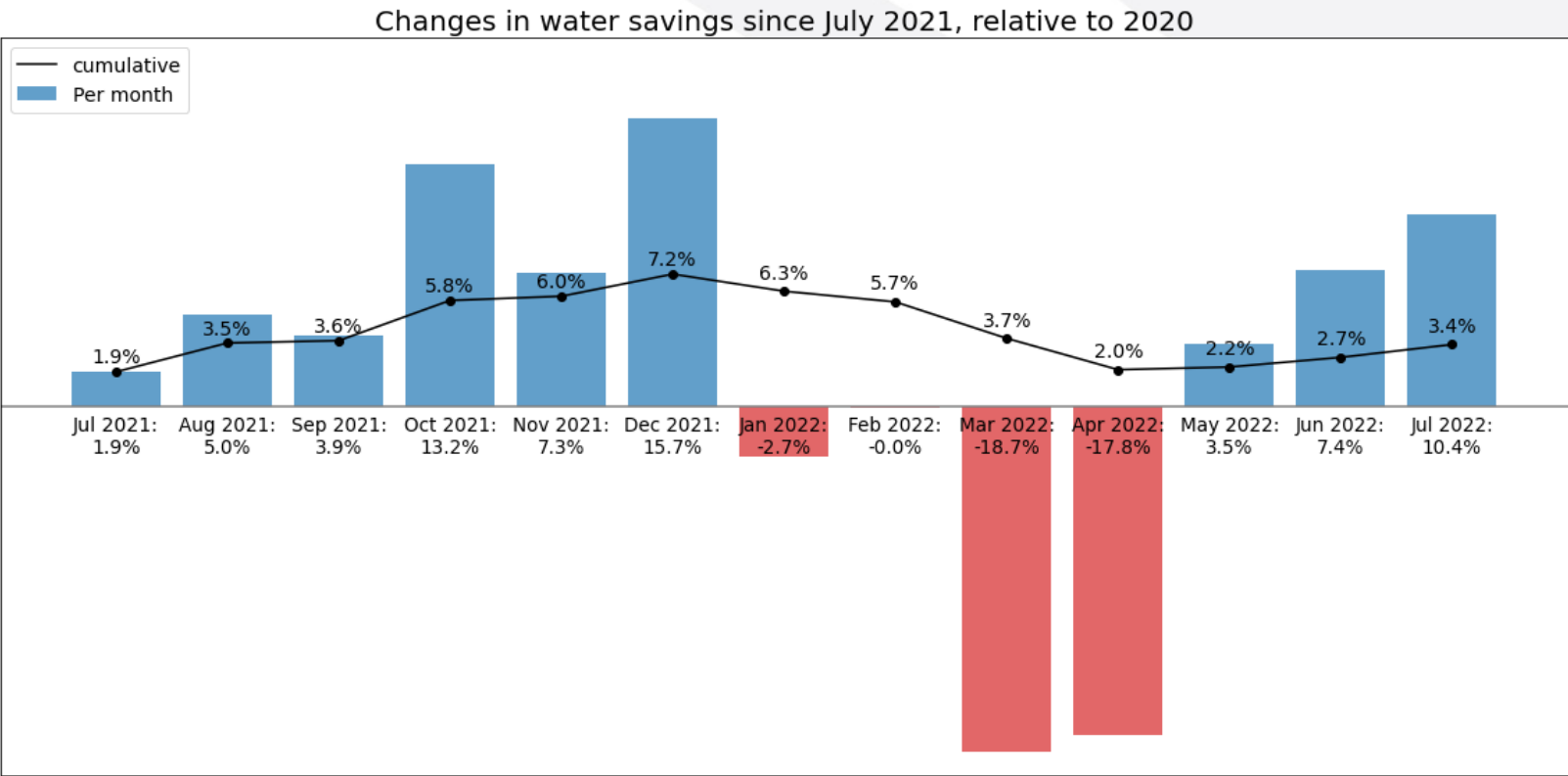


Residential use and drought

July 2022:
Residential use = 104 R-GPCD
Second lowest July in dataset



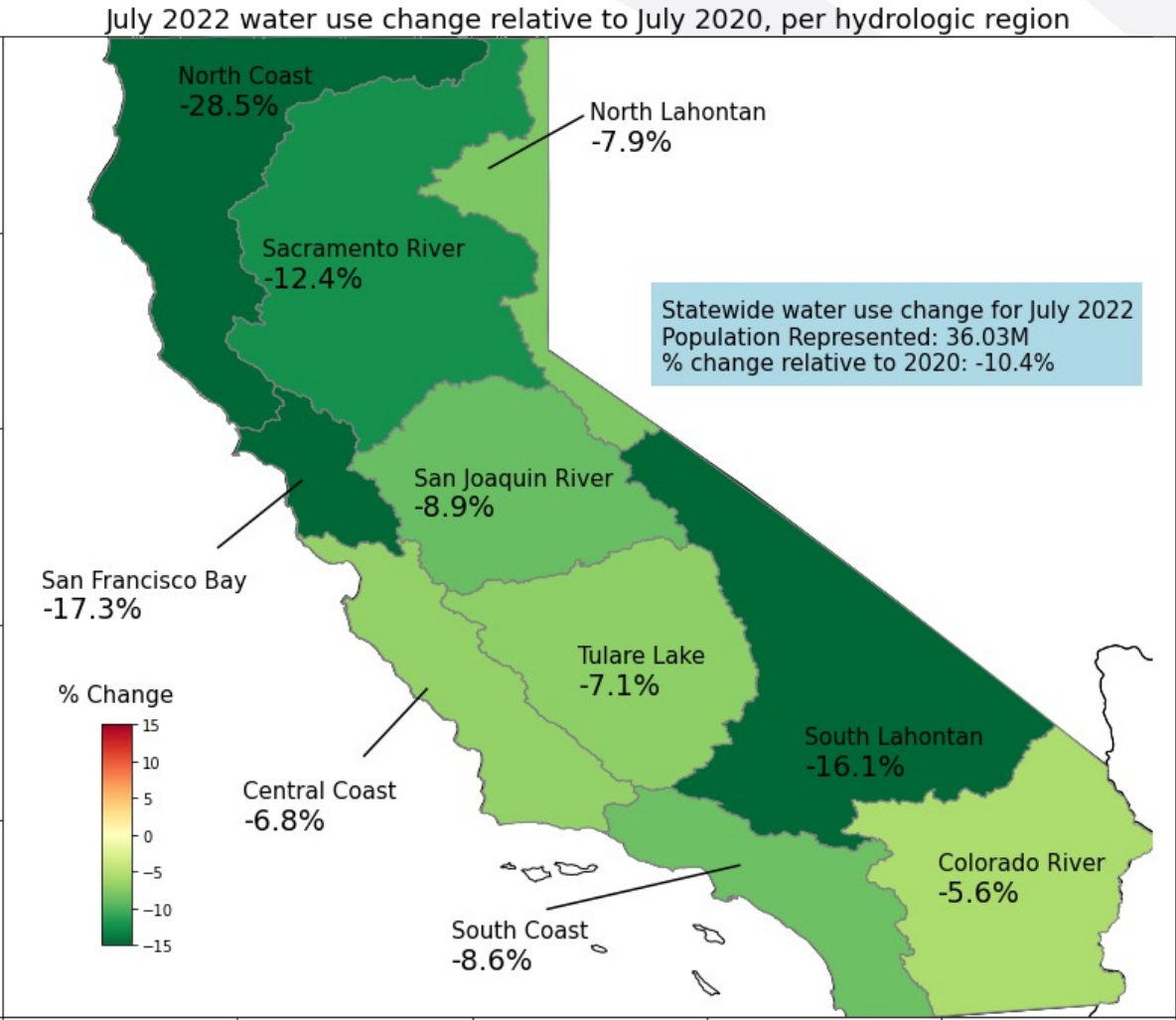
Statewide savings for July 2022



- **July 2022:**
10.4% savings
relative to July 2020

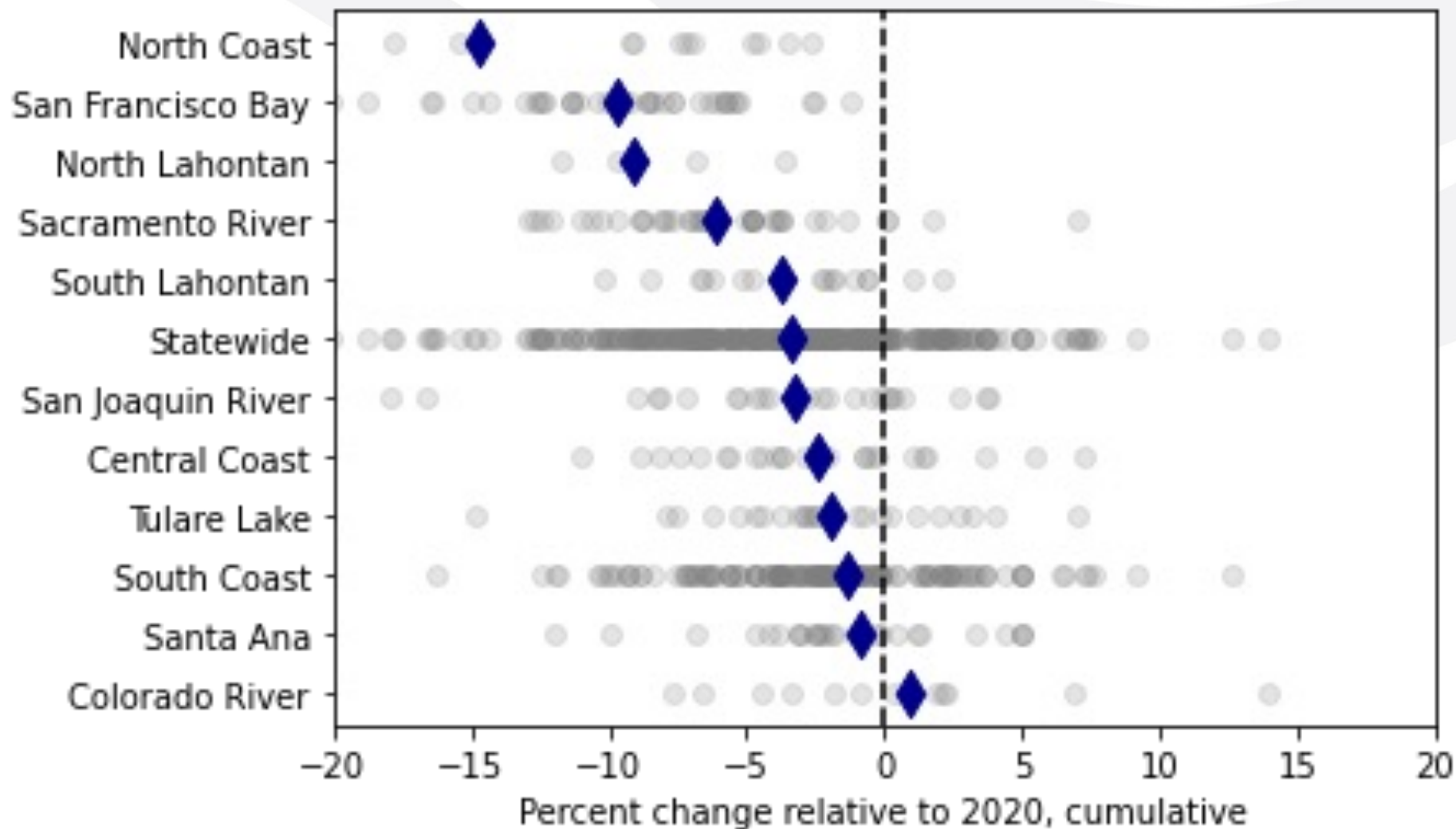
- **July 2021 to July 2022:**
3.4% cumulative savings
relative to 2020

Regional changes for July



Hydrologic Region	Percent of State Population	Percent change from 2020
North Coast	1.1%	-28.5%
San Francisco Bay	18.0%	-17.3%
South Lahontan	2.3%	-16.1%
Sacramento River	7.7%	-12.4%
San Joaquin River	4.6%	-8.9%
South Coast	55.1%	-8.6%
North Lahontan	0.3%	-7.9%
Tulare Lake	5.4%	-7.1%
Central Coast	3.5%	-6.8%
Colorado River	2.1%	-5.6%
STATEWIDE		-10.4%

Savings since July 2021



EFFECTIVE DATE	A. PROHIBITED FOR ALL CALIFORNIANS	B. ADDITIONAL REQUIREMENTS FOR URBAN WATER SUPPLIERS
[1] Effective until January 2023	<ul style="list-style-type: none"> • Outdoor watering that lets water run onto sidewalks and other areas (except incidental runoff) • Washing vehicles without an automatic shutoff nozzle • Washing hard surfaces like driveways or sidewalks that don't absorb water • Street cleaning or construction site preparation • Filling decorative fountains, lakes, or ponds • Outdoor watering within 48 hours after at least 1/4 inch of rainfall • Watering ornamental turf on public medians 	<ul style="list-style-type: none"> • Follow all prohibitions in column A • If needed, exercise authority to adopt more stringent local conservation measures
[2] Effective until June 2023	<ul style="list-style-type: none"> • Watering non-functional lawns in commercial, industrial, and institutional areas, including common areas of homeowners' associations (HOAs) <p>Note: You may also be a customer of a local water supplier that adopted stricter water conservation measures; check with your supplier about their current restrictions.</p>	<ul style="list-style-type: none"> • Follow all prohibitions in column A • Implement all local Level 2 demand reduction actions [*] • If needed, exercise authority to adopt more stringent local conservation measures
Enforcement	<p>All water use prohibitions in column A are "infractions," and any organization that already has the authority to enforce infractions may do so; this may include local water suppliers and cities. Violations may be punishable by a fine of up to \$500 per day. To report a potential water use violation, go to SaveWater.CA.Gov on your phone or computer.</p>	

Prohibited potable water use for all Californians

- Outdoor watering that lets water **run onto sidewalks** and other areas (except incidental runoff)¹
- Washing vehicles without an **automatic shutoff nozzle**¹
- Washing **hard surfaces** like driveways or sidewalks that don't absorb water¹
- **Street cleaning** or **construction** site preparation¹
- Filling **decorative fountains**, lakes, or ponds¹
- Outdoor watering within 48 hours after at least 1/4 inch of **rainfall**¹
- Watering **non-functional lawns** in commercial, industrial, and institutional areas, including common areas of homeowners' associations (HOAs)²

(1) = Effective since Jan 18, 2022 (2) = Effective since June 10, 2022



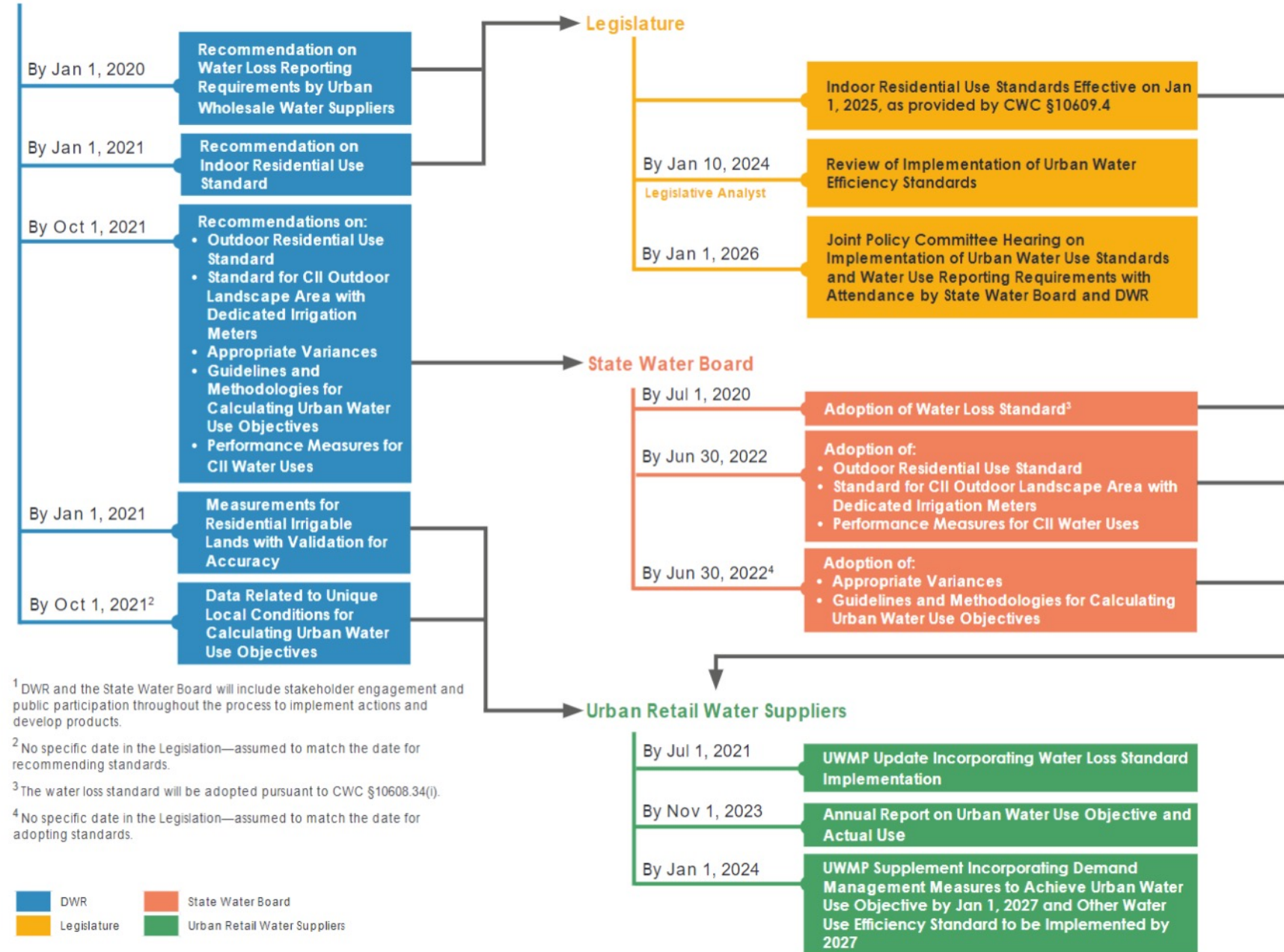
Non-functional turf is mowed grass that is only decorative, not regularly used by people

- Non-functional turf **is**
 - solely ornamental
 - not regularly used for human recreational purposes or for civic or community events
- Ban **applies** to
 - potable water only
 - Commercial, industrial, and institutional turf, including common areas maintained by homeowners' associations (HOAs)
- Water **trees** to maintain health!



You are here

DWR



Making Conservation a Way of Life— *likely rulemaking schedule*

Task	Start date	End Date
Start rulemaking <small>(First public comment period)</small>	January 2023	March 2023
Second comment period	May 2023	July 2023
Adoption hearing	Early Fall 2023	
Submit to OAL	Late Fall 2023	
Rulemaking becomes effective	January 2024	

