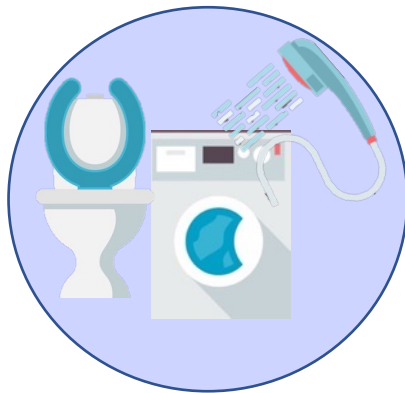


# *What the* FRAMEWORK?

A ROUND-UP OF WHAT'S GOING ON WITH THE NEW CONSERVATION REGULATIONS

**INDOOR  
RESIDENTIAL USE**



+

**OUTDOOR  
RESIDENTIAL USE**



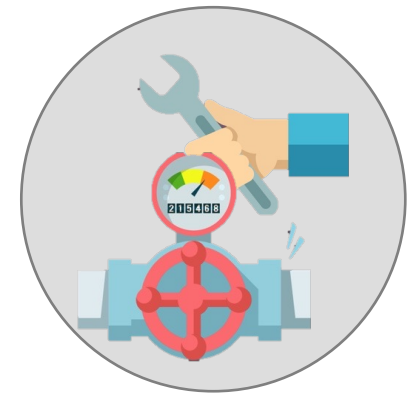
+

**CII LANDSCAPE**



+

**WATER LOSS**

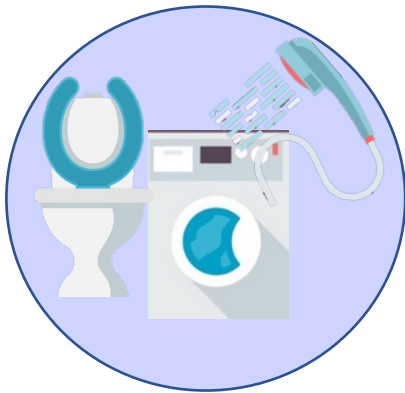


[CalWEP.org/framework-updates](http://CalWEP.org/framework-updates)

# Calculating your Urban Water Use Objective

**Providers will need to meet the SUM of the standards**

INDOOR  
RESIDENTIAL USE



+

OUTDOOR  
RESIDENTIAL USE



+

CII-DIM LANDSCAPE



+

WATER LOSS



+ (Variances) + (Recycled Water Bonus)

=

**WATER PROVIDER'S UNIQUE OBJECTIVE**

# As 2022 Sunsets, Where Are We At?

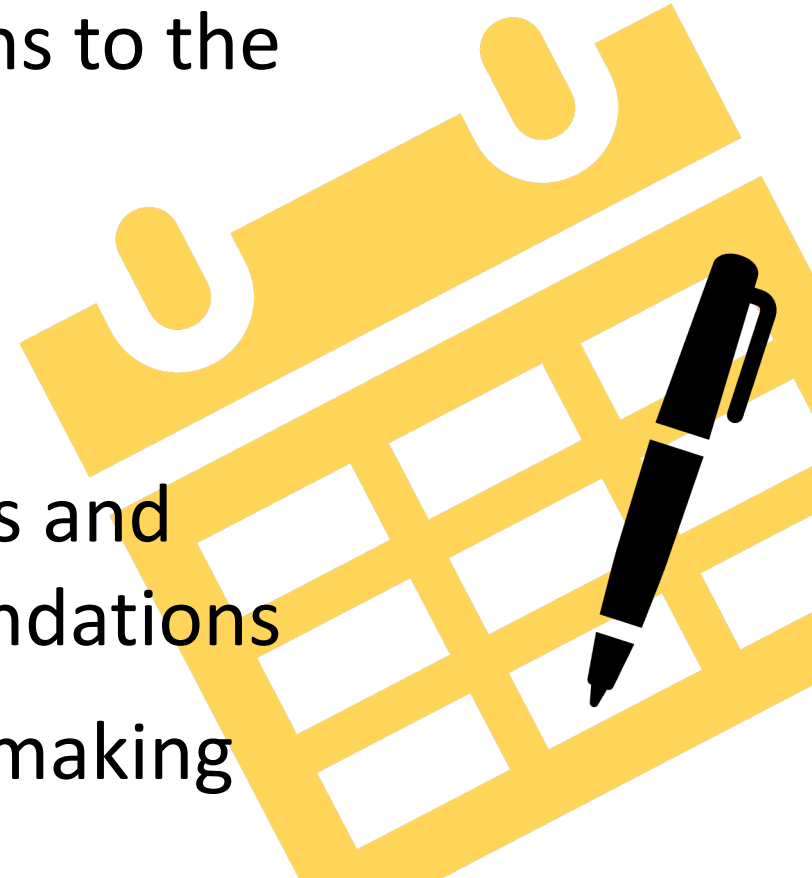
09.28.22 – SB 1157 Indoor Residential Water Use Standards (GPCD) were signed into law

09.29.22 - DWR submitted recommendations to the State Board on all remaining Standards and Performance Measures

10.19.22 - Water Loss Standards adopted

10.28.22 – DWR Releases 20+ technical docs and guidance docs in support of their recommendations

2023: The State Board will initiate final rulemaking





**INDOOR  
RESIDENTIAL USE**

**UPDATED** Indoor Standard Passed Legislature

**2020: 55 GPCD**

**2025: 47 GPCD**

**2030: 42 GPCD**



## WATER LOSS

- **Real** system water loss targets must not be exceeded.
- Use the State Board's economic model to calculate losses using supplier audit data.
- Losses reported in gallons per connection per day



OUTDOOR  
RESIDENTIAL USE

**OR Water Budget =**

$$(E_{To} - P_{eff}) \times (LAs) \times (ETF) \times (0.62)$$

**ORWU** = Outdoor Residential Water Use (gallons)

**ET<sub>o</sub>** = Reference evapotranspiration (inches)

**P<sub>eff</sub>** = Effective precipitation (inches)

**LAs** = Landscape area for a water supplier (sq. ft)

**ETF** = ET Factor (unitless) represents a percentage of reference ET<sub>o</sub>; function of plants' water needs & irrigation efficiency

**0.62** = unit conversion factor

# Outdoor Residential Standard (ETF)

$$\text{OR Water Budget} = (\text{ETo-Peff}) \times (\text{LAs}) \times (\text{ETF}) \times (0.62)$$

2023 – 2029 = 0.80 ETF\*

2030 and thereafter = ~~0.65~~ ETF

0.63 ETF

New Developments = 0.55 (or current MWEL0 ETAF value)

Special Landscape Areas (SLA) = 0.80, 0.63 (beg. 2030) ETF

\* Note that DWR has assumed an irrigation efficiency of 80%

# CII-DIM Standard

$$\text{CII-DIM Water Budget} = (\text{ETo-Peff}) \times (\text{LAs}) \times (\text{ETF}) \times (0.62)$$

2023 – 2029 = 0.80 ETF\*

2030 and thereafter = ~~0.65~~ ETF

0.63 ETF

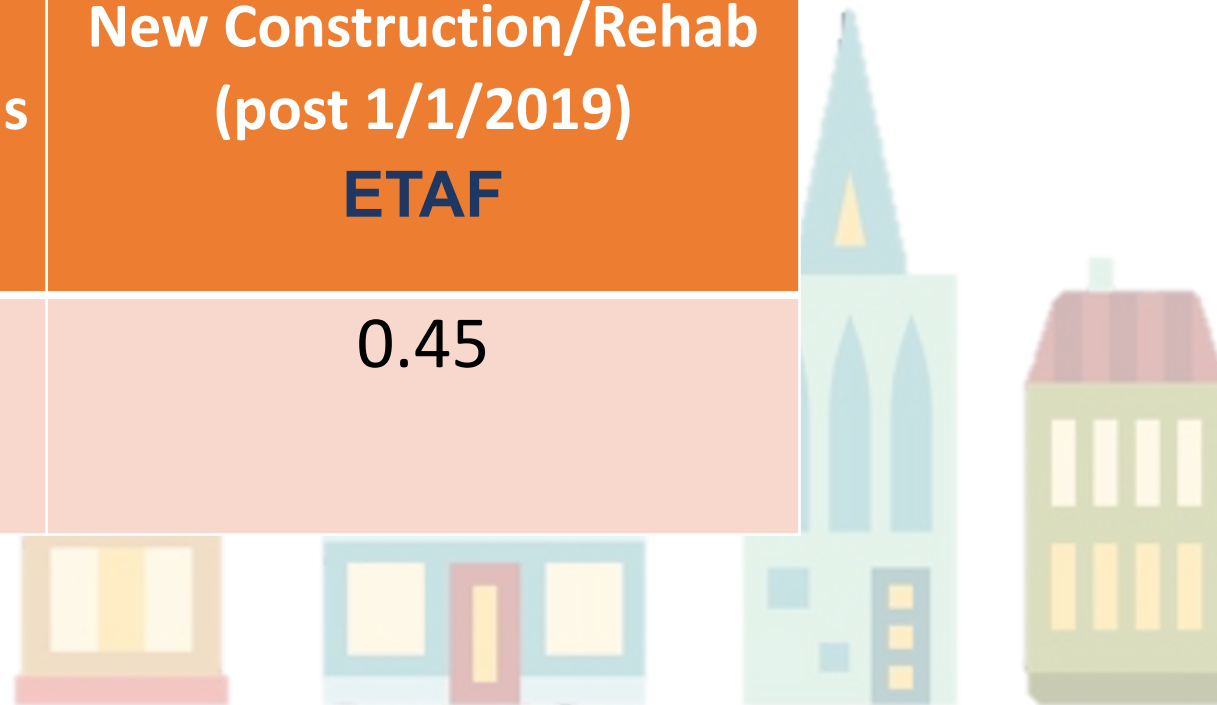
\* Note that DWR has assumed  
an irrigation efficiency of 80%



# CII-DIM Standard

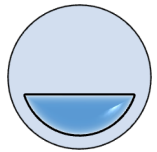
1. Calculate CII-DIM Water Budget for aggregate landscape area
2. Calculate MWELO Max. Applied Water Allowance (MAWA) for Special Landscape Areas and new or rehabed landscapes (1/01/19)

| Compliance Year | Irrigated (II) EFT | Special Landscape Areas (SLA) - ETAF | New Construction/Rehab (post 1/1/2019) ETAF |
|-----------------|--------------------|--------------------------------------|---|
| 2023            | 0.80               | 1.0                                  | 0.45  |
| 2030            | 0.63               |                                      |   |



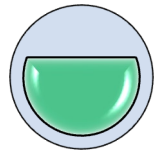
# What's on the horizon? . . . CII-DIM Std.

- **2023**: All CII-DIMS must be identified
- **2023**: *\*\*or upon Board adoption\*\** Measure 20% of CII-DIM landscapes, and another 20% each subsequent year.



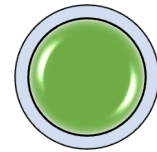
1st

Geolocate DIMs  
(No GIS? > record  
lat./long. For later  
incorporation into  
geospatial  
database



2nd

ID exempt  
landscapes or SLA  
DIMs



3rd

Measure “Irrigable  
Irrigated” landscapes  
only and determine  
aggregate area  
(20%/yr)

# What's on the horizon? . . . Rulemaking

The State Board has proposed the following “likely” schedule for finalizing Long-Term Framework rulemaking

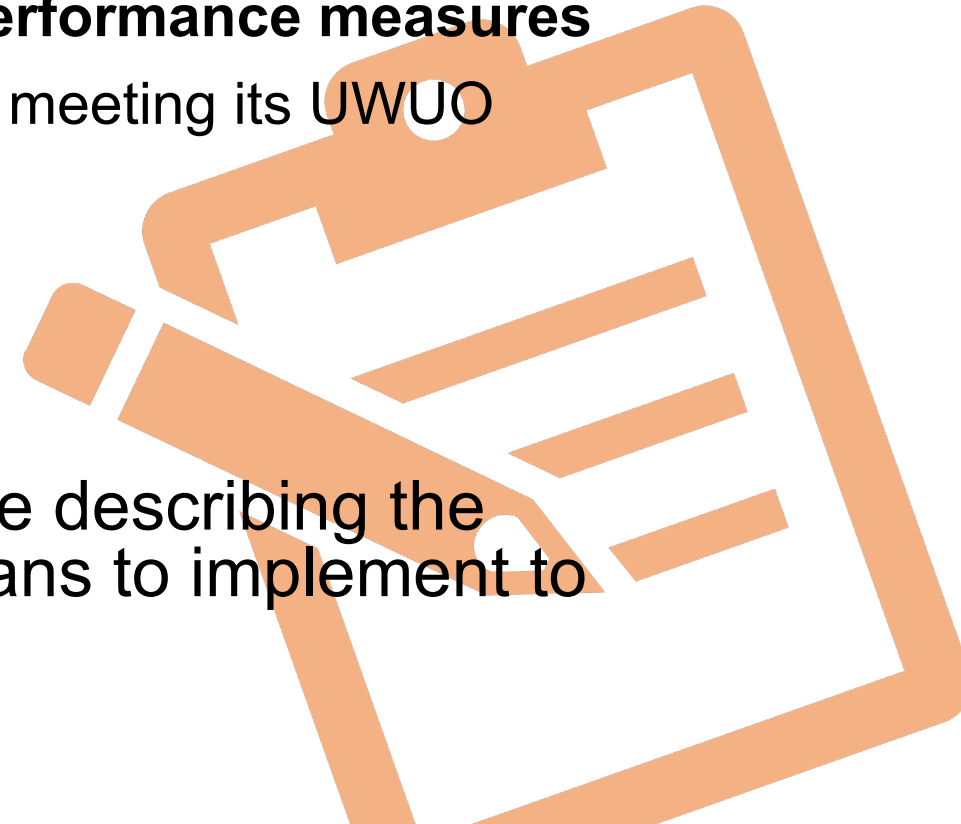
| Task  | Start date      | End Date   |
|---|-----------------|------------|
| <b>Start rulemaking</b> (First public comment period) | January 2023    | March 2023 |
| <b>Second comment period</b>                          | May 2023        | July 2023  |
| <b>Adoption hearing</b>                               | Early Fall 2023 |            |
| <b>Submit to OAL</b>                                  | Late Fall 2023  |            |
| <b>Rulemaking becomes effective</b>                   | January 2024    |            |

# What's on the horizon? . . . Reporting

Jan 1, 2024 reporting requirements for calendar year **2023**:

1. Calculate **Urban Water Use Objective** (UWUO)
2. Calculate **actual water use** with supporting data
3. Documentation of the implementation of **CII performance measures**
4. Description of a **supplier's progress** towards meeting its UWUO
5. Validated **water loss audit report**

NOTE: The first report must include a narrative describing the **water demand management measures** it plans to implement to achieve its UWUO by Jan. 1, 2027.



# State Board Enforcement -Timeline



Jan. 1, 2024 (*2023 calendar water use*)

---

- The State Board may issue *informational orders* pertaining to water production, water use and water conservation to an urban retail supplier that does not meet its Urban Water Use Objective (UWUO).

Jan. 1, 2025 (*2024 calendar water use*)

---

- The State Board may issue *written notices* to an urban retail supplier that does not meet its UWUO. May request that the supplier address areas of concern in its next annual report.

Jan. 1, 2026 (*2025 calendar water use*)

---

- The State Board may issue a *conservation order* to an urban retail supplier that does not meet its UWUO.



# State Board Enforcement

- 2026: What's included in a State Board issued **conservation order**?
  - ✓ Referral to DWR for technical assistance
  - ✓ Requirements for education and outreach to customers
  - ✓ Requirements for local enforcement
  - ✓ Other efforts to help the urban supplier meet its UWUO
- The State Board is **prohibited** from issuing any notice or order when both of the following are met:
  1. Supplier does not meet UWUO solely because the volume of water loss exceeds the supplier's Water Loss Standard, and
  2. The State Board is taking enforcement action against the supplier for not meeting its Water Loss Standard.

# Got Questions? . . . CalWEP's here to help!

- ✓ CalWEP's Framework Resource Hub and WTF? Blog
- ✓ Cutsheets: Standards and Performance Measures
- ✓ Conservation Coordinator Trainings: Data Tracking and Reporting
- ✓ CII Classification Guidance Document
- ✓ Lists of tools and consulting services



## CUT SHEET: The Residential Indoor Standard

### The Background

SB 606 and AB 1668, referred to as the Long-Term Framework legislation, are intended to make conservation a California way of life. The legislation tasked the California Department of Water Resource (DWR) with providing regulation recommendations to the State Water Resource Control Board (State Board) that include water use efficiency Standards, Variances and Performance Measures for urban water suppliers. The Standards and Performance Measures are intended to improve water efficiency at a supplier level. Standards establish quantitative requirements that must be tracked reported, whereas Performance Measures establish qualitative requirements that also must be reported.

In total, three water use standards (WUS) and one water loss standard establish an overall water volume threshold, known as an Urban Water Use Objective (UWUO), that a supplier cannot exceed on an annual basis (see Equation 1). Water suppliers that exceed their UWUO may be required to enact policies and programs to achieve water savings. Additional enforcement measures include fines directly to the supplier.

### Equation 1: Urban Water Use Objective (UWUO)

$$UWUO = \text{Residential Indoor WUS} + \text{Residential Outdoor WUS} + \text{CII-DIM WUS} + \text{Water Loss Std.}$$

Adjustments to an UWUO can be made via Variances or Bonus Incentives like recycled water, where applicable per supplier, and potentially a cap on the severity of water use reductions required of urban retail water suppliers (if approved by the State Water Board)<sup>1</sup>. The SWRCB is expected to adopt the final regulations in spring of 2023<sup>2</sup>. Changes to the current statute will require additional/future legislative actions. Until that time, the current statute is what suppliers will be required to meet.

Supplier are required to submit an annual report to the SWRCB beginning January 1, 2024 for the 2023 reporting year. The report must include a supplier's calculated URWUO as well as their annual usage.

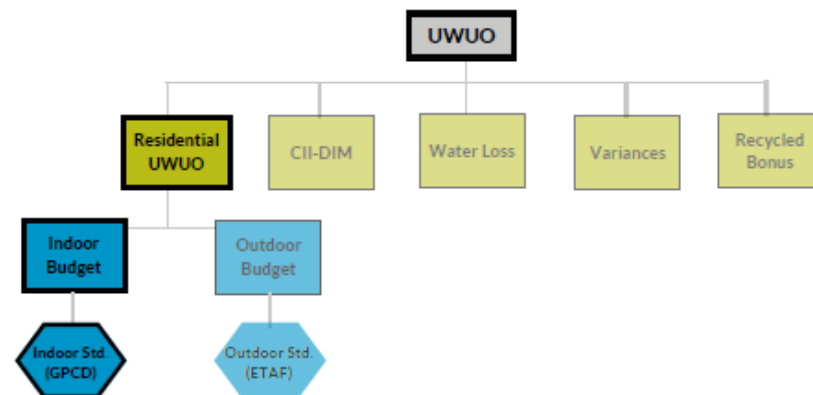
<sup>1</sup> Paragraph 13.2: Comparison of Water Use Objective to Actual Water Use, from "Recommendation for Outdoor Residential Water Use Efficiency Standard (WUES-DWR-2021-02)", September 2022.

<sup>2</sup> As presented by the State Water Resources Control Board at CalWEP's fall plenary (September 8, 2022)

### The Basics - Residential Indoor Standard

Together, the Residential Indoor Standard and the Residential Outdoor Standard establish the Residential Urban Water Use Objective (RUWUO). The RUWUO is the water efficiency target for each water supplier's service area. This cut sheet exams the Residential Indoor Standard, only.

Figure 1: Water Use categories that comprise a supplier's Urban Water Use Objective



The Residential Indoor Standard is the maximum allowed indoor water use measured in gallons per capita per day (GPCD). It is intended to represent efficient use. The Residential Indoor Standard will decrease over time (see Table 1 below).

Table 1: Residential Indoor Standards

| Compliance Year | Allowable GPCD |
|-----------------|----------------|
| 2020            | 55             |
| 2025-2030       | 47             |
| 2030 onward     | 42             |

Suppliers must calculate a supplier-level annual indoor water budget by multiplying population served by the Residential Indoor Standard (Allowable GPCD) by 365 days (see Equation 3). When population served is held constant, a supplier's indoor water budget would decrease per compliance years. This supplier level annual indoor water budget will be added to the supplier-level annual outdoor water budget to arrive at the RUWUO.

<sup>3</sup> SB 1157 (Hertzberg, D-Van Nuys) was signed into law in September of 2022, which established progressively more efficient Residential Indoor Standards through 2030. DWR, in coordination with the SWRCB, shall conduct necessary studies and investigations to assess and quantify the economic benefits and impacts of the 2030 standard (42 GPCD) on water, wastewater and recycled water systems and shall also include saturation end-use studies by Oct. 1, 2028.

# FRAMEWORK RESOURCE HUB

CALWEP'S ONE STOP SHOP FOR IMPORTANT EVENTS AND DOCUMENTS



DWR Monthly Water Loss  
Webinar

March 17th, 2022  
Water Loss



DWR Draft Annual Water  
Supply and Demand  
Assessment Guidance  
Document Meeting

March 7th, 2022



DWR Monthly Water Loss  
Webinar

February 17th, 2022  
Water Loss

View



CalWEP Joint Task Force  
Brainstorm #2

February 15th, 2022

[CalWEP.org/framework-hub](https://CalWEP.org/framework-hub)

# Water Conservation Tracking Tool (v4)

## FRAMEWORK TARGETS

- Water Use Objective Calculator
- Compare to Projected Water Use
- Determine if Over/Under Objective
  - Residential
  - CII Landscape
  - System Water Loss
  - Overall
- Identify Least-Cost Path to Compliance
- Impact to Utility Revenue Requirements and Rates

[illegible]

An aerial photograph of a landscape with various colored overlays: red for buildings, yellow for fields, green for trees, and blue for water. A black rectangular box is centered over the image, containing white text. A small white circle is visible on the map in the upper right quadrant.

# Questions?

[Lisa@CalWEP.org](mailto:Lisa@CalWEP.org)