

CAMPUS WATER CONNECTIONS: Lessons Learned From Water Conservation Incentives

Peer To Peer | 2 June 2021 | 1:00 PM - 2:00 PM



THE METROPOLITAN WATER DISTRICT
OF SOUTHERN CALIFORNIA



COUNCIL FOR
WATERSHED HEALTH

Gary Tilkian, Water Efficiency Team
gtilkian@mwdh2o.com

Eileen Alduenda, Executive Director
eileen@watershedhealth.org

Poll #1

What is/has been your level of interaction with schools to promote water/energy efficiency?

CAMPUS WATER CONNECTIONS

MWD Conservation Incentives & Schools

- Many schools in service area
- Relatively low participation in programs
 - Device rebate programs cannot cover all costs (purchase & installation)
 - Up-Front funded programs too difficult to reconcile
 - Timing constraints for school installations
 - \$ is tied to water savings – no outright grants for new equipment
- Agency rebate co-funding varies

CAMPUS WATER CONNECTIONS

MWD Conservation Incentives & Schools (cont.)

- Metropolitan as wholesale provider
 - Not enough staff/resources to develop relationships with schools and school districts
 - Do not have direct access to use/account data
 - Rely heavily on member and retail agencies to develop relationships
 - Welcome efforts of third party / trade allies

CAMPUS WATER CONNECTIONS

Third party / trade allies to implement projects

- Water-Energy nexus
 - SoCal Gas
 - SoCal Edison
 - SD Gas & Electric
- Other NGOs
- Contractors



A check presented to LAUSD for installing Boiler-less steamers in ~50 Schools. SoCalGas staff shepherded the process and helped LAUSD secure rebate funding.

Conservation Incentives

- **Commercial Landscape Surveys**
- **Turf Replacement Program**
- **Device Rebate Programs**
- **Landscape Training (& Cert) for Professionals**
- **Water Savings Incentive Program (WSIP)**
- **Stormwater for Recharge Pilot Program**
- **Member Agency Programs**



Rebate Success: South El Monte High School

Project	Turf Removal Program: Replace turf with drought tolerant plants, DG paths, and mulch; install drip irrigation and high-efficiency MP rotator sprays
Estimated water savings	13.7M gallons over 10 years
Metropolitan incentive	\$64,668



Rebate Success: South El Monte High School



Before



After

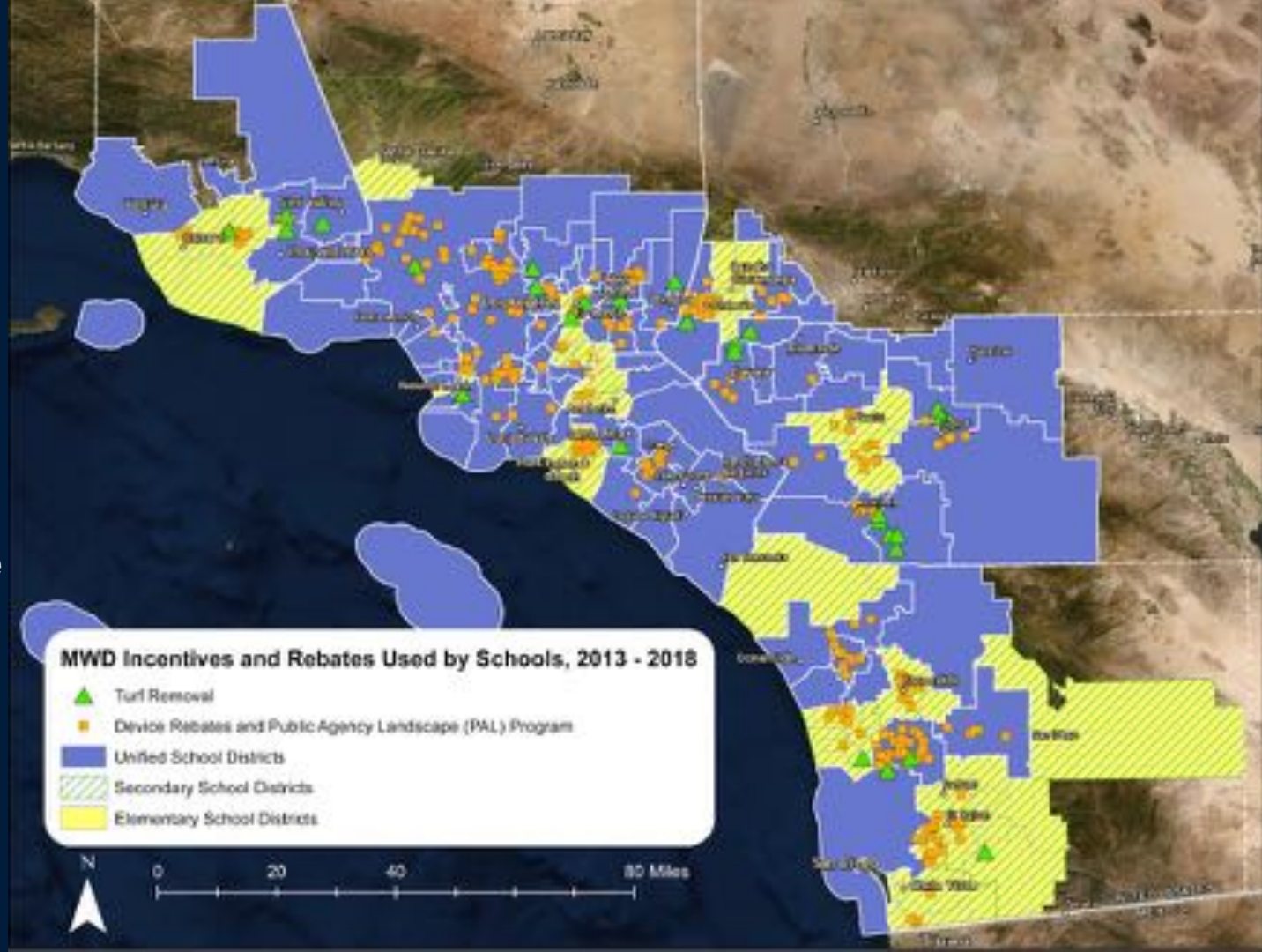


Poll #2

How interested are schools or school districts in increasing on-site efficiency or sustainability?

Reported Metropolitan Incentive Use

- 8% Landscape
- 20% Device
- 72% PAL & device



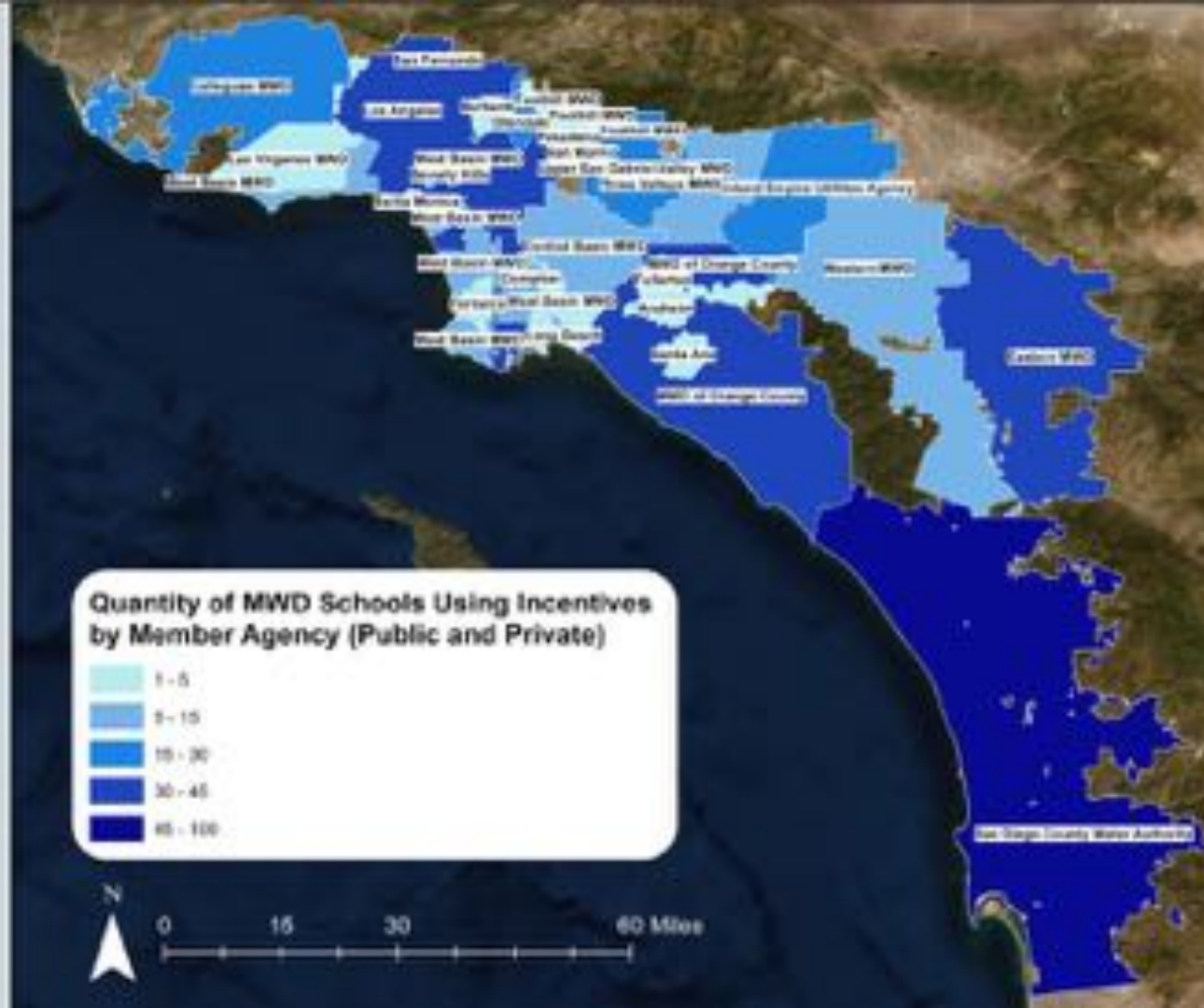
Density of MWD School Incentive Use by Member Agency

Public & Private Schools

Although LA has 100+ more schools than San Diego, San Diego has the most incentive use by schools.

Eastern MWD and LA are tied for incentive use, at 34 users, even though LA has almost 6x as many schools.

Overall, the number of schools using MWD incentives is very low. LADWP is a service area that should be targeted.



Poll #3

How can we get more schools to implement programs and participate in incentive programs?

CAMPUS WATER CONNECTIONS

CWH & Schools



Provide Technical Assistance



Monitor Performance



Educate & Engage



CAMPUS WATER CONNECTIONS

Goals

Identify barriers and challenges for schools to access and utilize water-saving incentives for projects.

Document school greening projects to help increase awareness about water-saving incentives and resources to support project implementation.



CAMPUS WATER CONNECTIONS



Image Credit: CWH

Phase 1 of 2

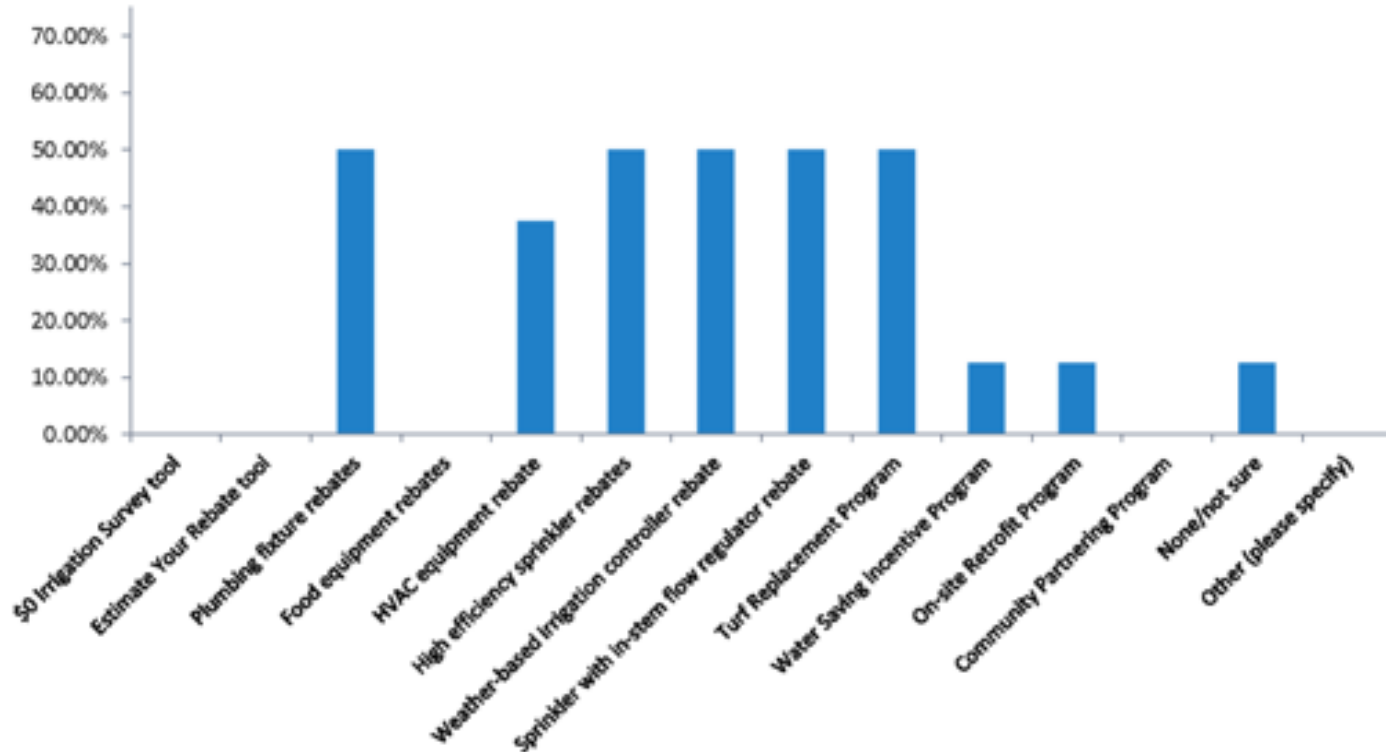
Determine school participation in water-saving incentive program and school greening projects.

- 1. Spatial Analysis**
- 2. Barrier Analysis**
- 3. Survey Assessment**

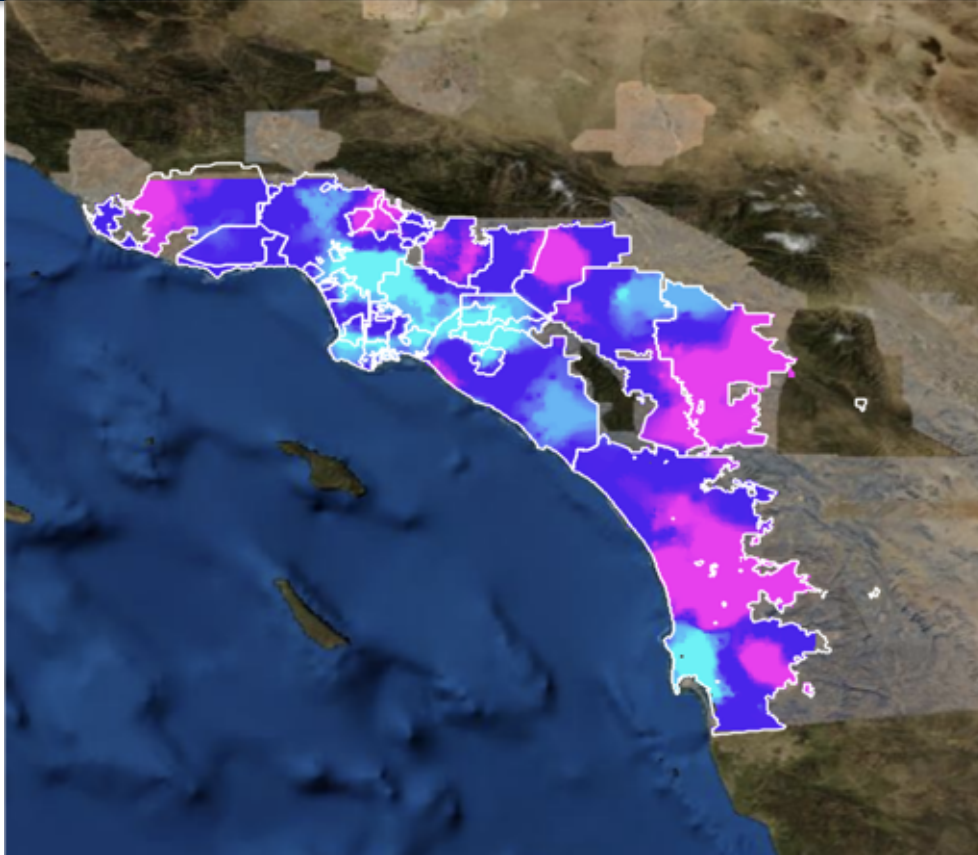


CAMPUS WATER CONNECTIONS

Which MWD incentives have you used?



CAMPUS WATER CONNECTIONS



MWD Incentive Participation

Pink: Med-High

Blue: No-Low



CAMPUS WATER CONNECTIONS



Image Credit: CWH

Phase 2 of 2

School water-saving and school greening projects.

1. School Surveys/Interviews

2. Case Studies & StoryMaps

- **DROPS**
- **Eagle Rock Elementary School StoryMap**



Poll #4

Who is the most likely entity to see efficiency or sustainability projects through to completion?

CAMPUS WATER CONNECTIONS



Image Credit: Bevin Ashenmiller

Lessons Learned

- **Preference/priority for learning gardens/outdoor classrooms**
- **School District influences conservation goals**
- **Easier to utilize device rebates**
- **Upfront costs are a challenge**
- **Limited capacity**



CAMPUS WATER CONNECTIONS



Opportunities

- **Opening after Covid**
- **NPDES MS4 Phase 2 Permit**
- **AB 841**
- **Assessing requirements & Aligning Incentives**
- **Package incentives among agencies**
- **Project Team Education/Awareness**
- **Convene Round Table / Symposium**



Poll #5

Where do you believe most schools or school districts stand with respect to efficiency or sustainability?

CAMPUS WATER CONNECTIONS



Questions

- **What incentives are available to schools in your service areas?**
- **What have been the biggest challenges working with school districts on water efficiency projects?**
- **What programs are already in place that you can build on?**

CAMPUS WATER CONNECTIONS



Thank you!

Gary Tilkian, Water Efficiency Team,
MWD

gtilkian@mwdh2o.com

Eileen Alduenda, Executive Director,
Council for Watershed Health

eileen@watershedhealth.org

