



# **Advancing Sustainable Landscapes in the Santa Ana River Watershed**

CalWEP Peer-to-Peer  
*May 15, 2019*

# About the Project

**Objective:** Implement sustainable landscape practices on commercial and industrial properties across the Santa Ana River Watershed.

**Phase 1 (complete):** Identify potential water-related benefits across the watershed, as well as motivations and barriers for greater uptake

**Phase 2 (underway):** Work directly with the business community to provide tools and resources, such as information on project benefits, incentive programs, and financing options, to advance adoption of sustainable landscape practices

**Project Partners:**



The CEO Water Mandate



1. Turf Replacement



2. Bioswales and Rain Gardens



3. Permeable Pavement



Source: BanksPhotos, iStock

4. Green Roofs



Source: Maxvis, iStock

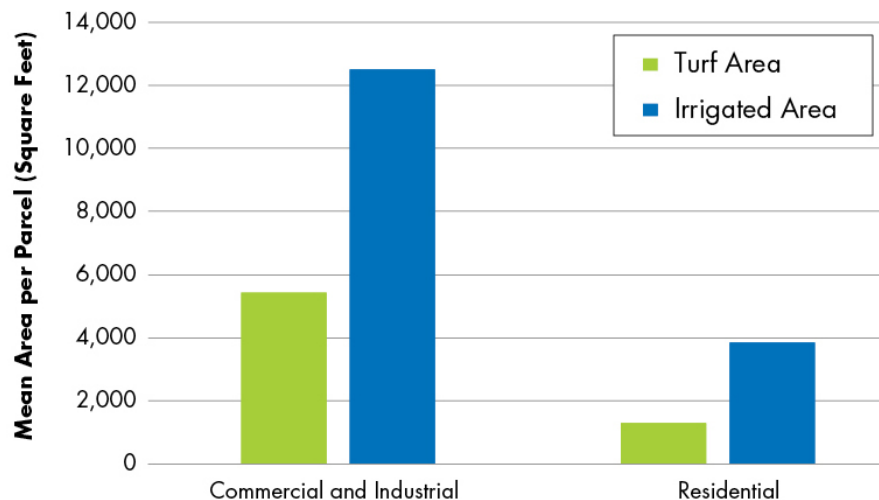
5. Rain Tanks and Cisterns



Source: Sharon Willis, iStock



# Why Sustainable Landscapes on Commercial and Industrial Properties?



# Business Motivations

- Financial savings



- Reputation and public perception



- Corporate sustainability goals and targets

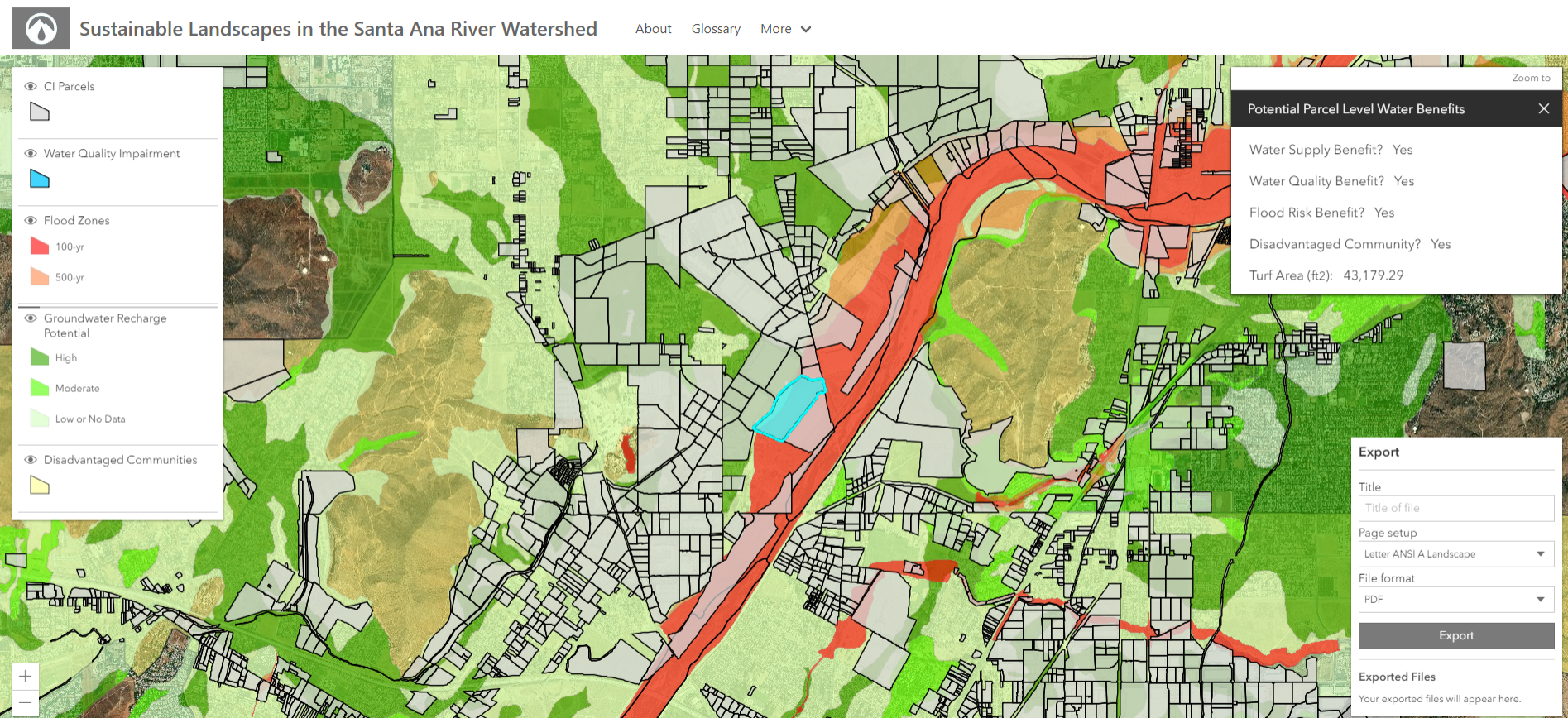


- Social responsibility





# Phase 2: Tools and Resources



[www.pacinst.org/santa-ana-benefits-map](http://www.pacinst.org/santa-ana-benefits-map)

# Thank you!

**Heather Cooley**  
**Director of Research, Pacific Institute**  
**[hcooley@pacinst.org](mailto:hcooley@pacinst.org)**

