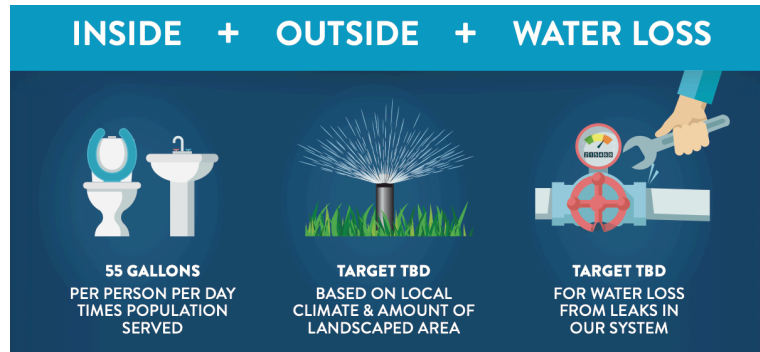


CALIFORNIA'S NEW WATER EFFICIENCY LAWS

OUTDOOR LANDSCAPE TARGETS: MEASUREMENT AND CLASSIFICATION

SB606 and AB1668, passed in 2018, intend to “make water conservation a California way of life” by providing a framework for water conservation and efficiency. The bills direct state regulators to calculate overall water efficiency targets for each water agency (over 3,000 connections) based on the combination of indoor water use, outdoor water use, and water loss.



A critical piece of the outdoor calculation involves aerial surveys to determine the amount of irrigated and irrigable landscape area for each water agency's service area. Agencies will receive this data directly from the Department of Water Resources (DWR) with access to imagery through an online “portal” that will be available for a *limited time*. CalWEP is committed to responding to our members' needs and working with both DWR and the company conducting the state-wide analysis for DWR, Eagle Aerial Solutions, to ensure agencies have access to the resources they need to prepare, assess, implement and comply with these new regulations.

NOTE: Detailed agency reporting requirements will be based on regulations yet to be finalized. However, the information compiled for those reports must be based on classification data that meets the methodology and classification schemes currently being developed by DWR through pilots and a stakeholder process.

WHAT WILL DWR BE PROVIDING WATER AGENCIES?

Over the next two years, DWR will be providing residential landscape area measurement data to every retail urban water agency in the state. The data will be provided in tabular format and will be accompanied by aerial imagery hosted on an online portal with tools to assess the accuracy. Note, while agencies will be able to retain the tabular data permanently, they will only be able to access the aerial imagery and the portal for a limited time. The portal's main function will be for agencies to assess the accuracy of the tabular data and provide feedback to both DWR and Eagle Aerial Solutions.

AGENCIES HAVE THE OPTION TO PURCHASE THE SAME IMAGERY USED BY DWR DIRECTLY FROM EAGLE AERIAL SOLUTIONS (this is NOT required for compliance!)

Several member agencies have expressed an interest in acquiring aerial imagery of their service areas for various reasons, including (but not limited to) conducting their own advanced landscape analysis following DWR specifications in response to forthcoming state-mandated water conservation targets.

To meet this need, CalWEP is partnering with Eagle Aerial to make available the same one-foot pixel resolution imagery that is being used by DWR for purchase by water agencies. The imagery is available directly from Eagle Aerial Solutions. **Purchasing this data is not mandatory for compliance and is completely optional.** The cost per agency is \$750 plus \$6 for each square mile over 125 square miles. If interested, contact Eagle Aerial Solutions directly at 714-754-7670 or at info@eagleaerial.com.

STAY TUNED FOR CALWEP MEMBER BENEFITS

CalWEP and Eagle Aerial Solutions are exploring the co-development of additional tools and resources to help members meet their water conservation targets. For questions or suggestions, contact tia@calwep.org.