

# Multi-benefit Approach with Non-profit Partners

Trathen Heckman, *Executive Director*



*because every choice matters*



*because every choice matters*

# Inspiration | Education | Application | Transformation

- Be the Change
- Spread Solutions and Models
- Build and Connect Community Leadership
- Shift Culture and Policy

An infographic on a light-colored background with a dark border. It lists several statistics in a clean, sans-serif font. At the bottom, there is a circular inset image showing a person working in a garden, with the text 'How is it all done?!?' next to it.

**Over 500 partner organizations**  
(too many to count)

- 1,220 programs
- 59,411 people educated and engaged
- 34,468 local Community Resilience Challenge actions
- 84,836 national Community Resilience Challenge actions
- 285,750 square feet turf transformed, saving 5,357,813 gallons of water each year
- 67 greywater systems installed
- 97 landscapes transformed

How is it all done?!?

# Be the Change – Start at Home



# Then the Garden goes Pop

BEFORE

AFTER



# Create a Public Food Forest

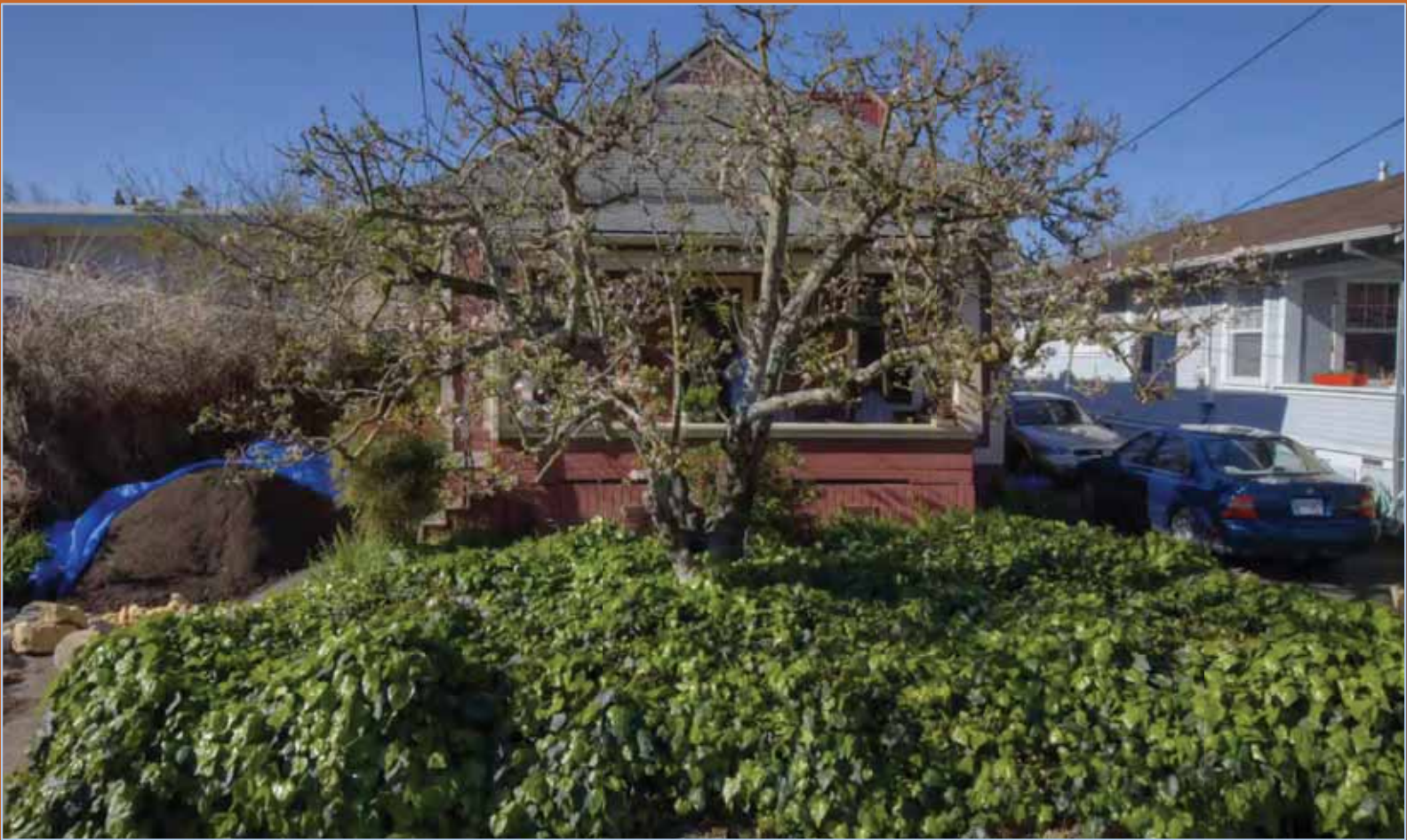
BEFORE



AFTER



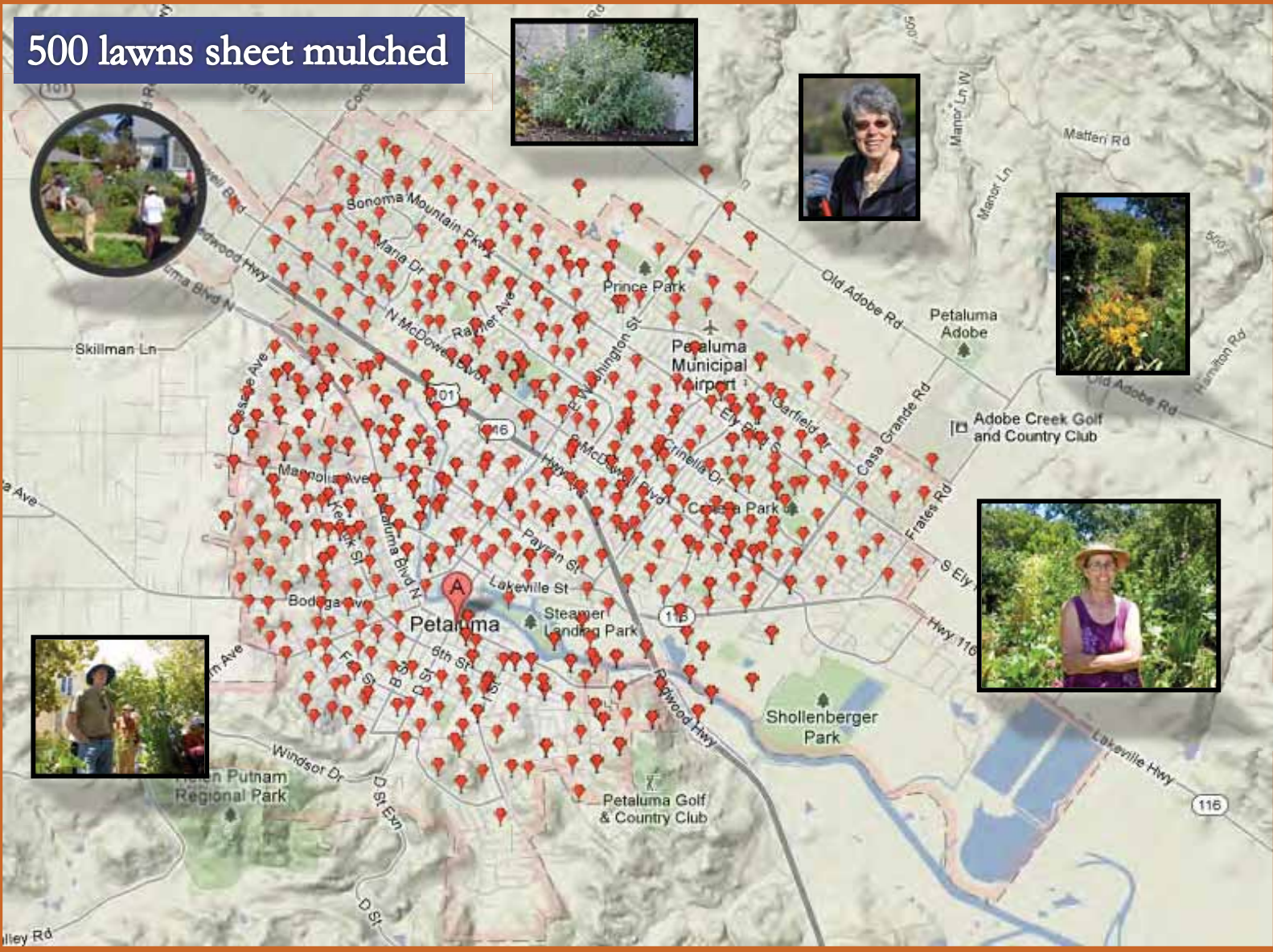
# Then the Neighborhood goes Pop



# Take it to City Hall



# 500 lawns sheet mulched





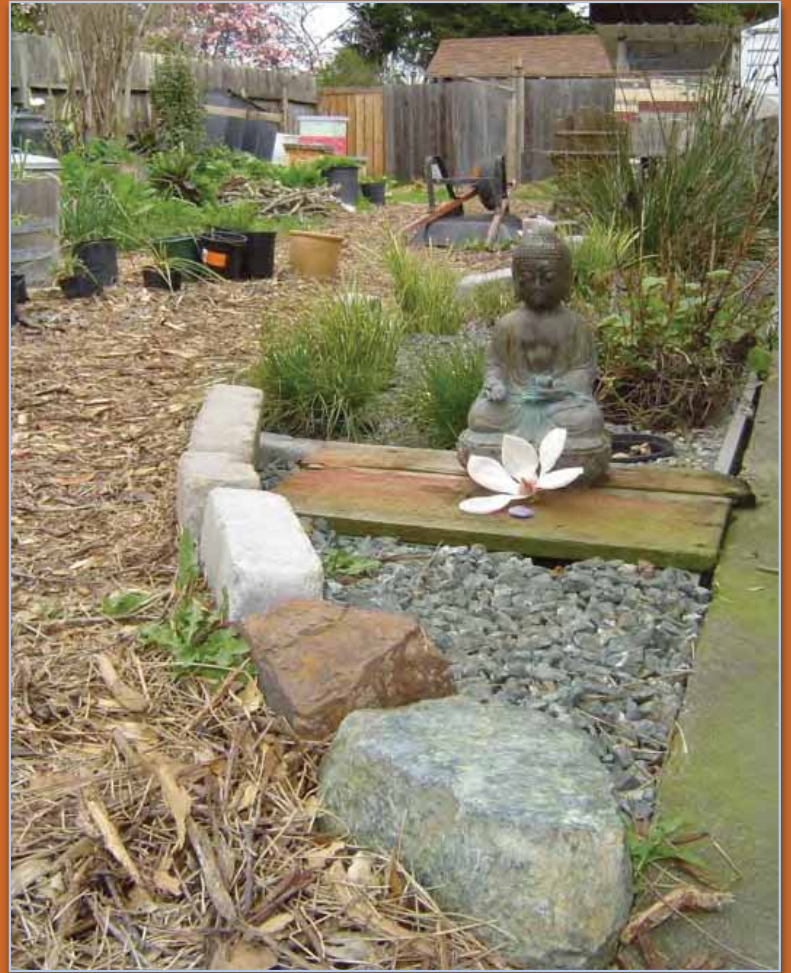
# Then the Town Goes Pop



# Create People-Powered Parks



# Catalyze a Laundry Water Revolution



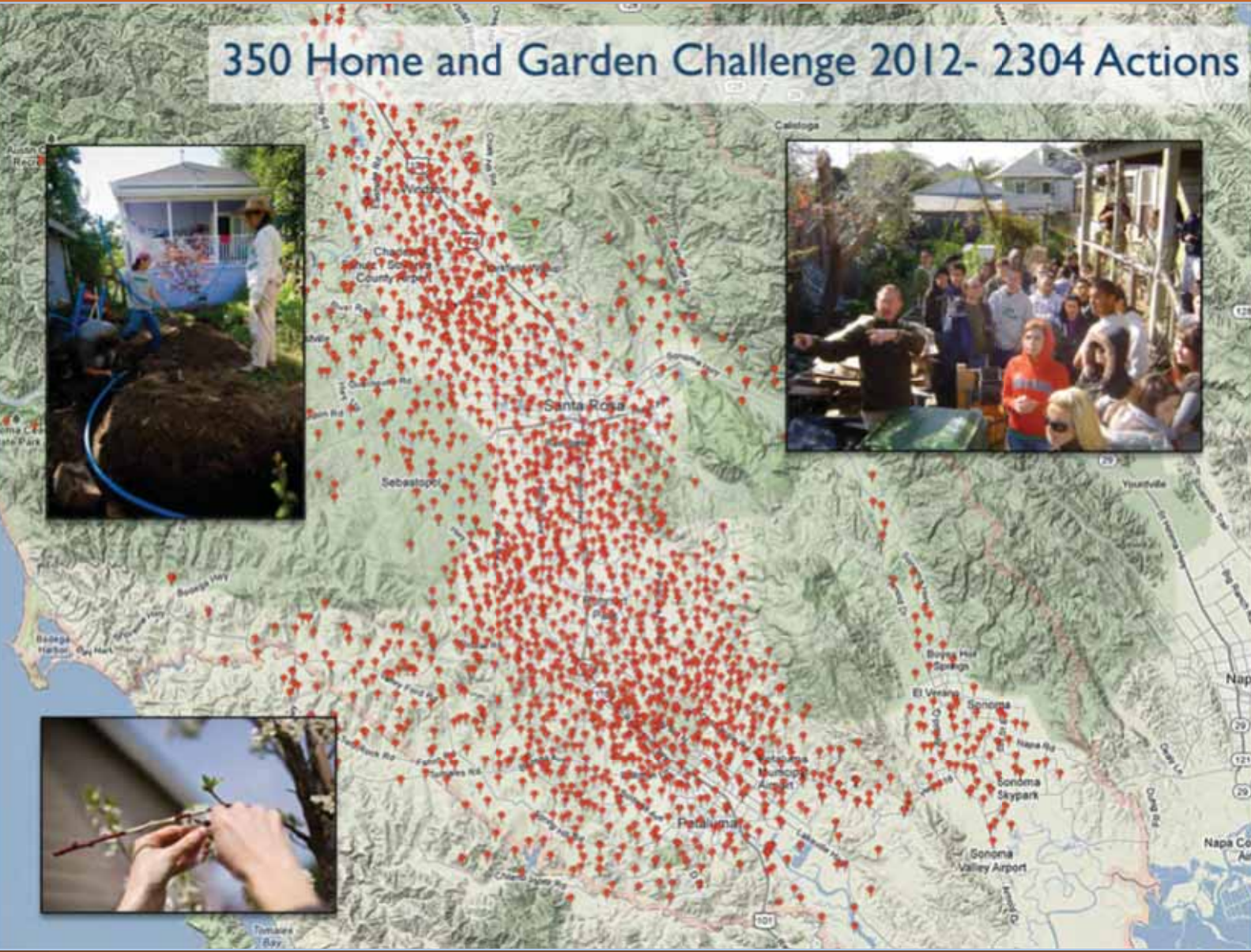
# The 350 Garden Challenge

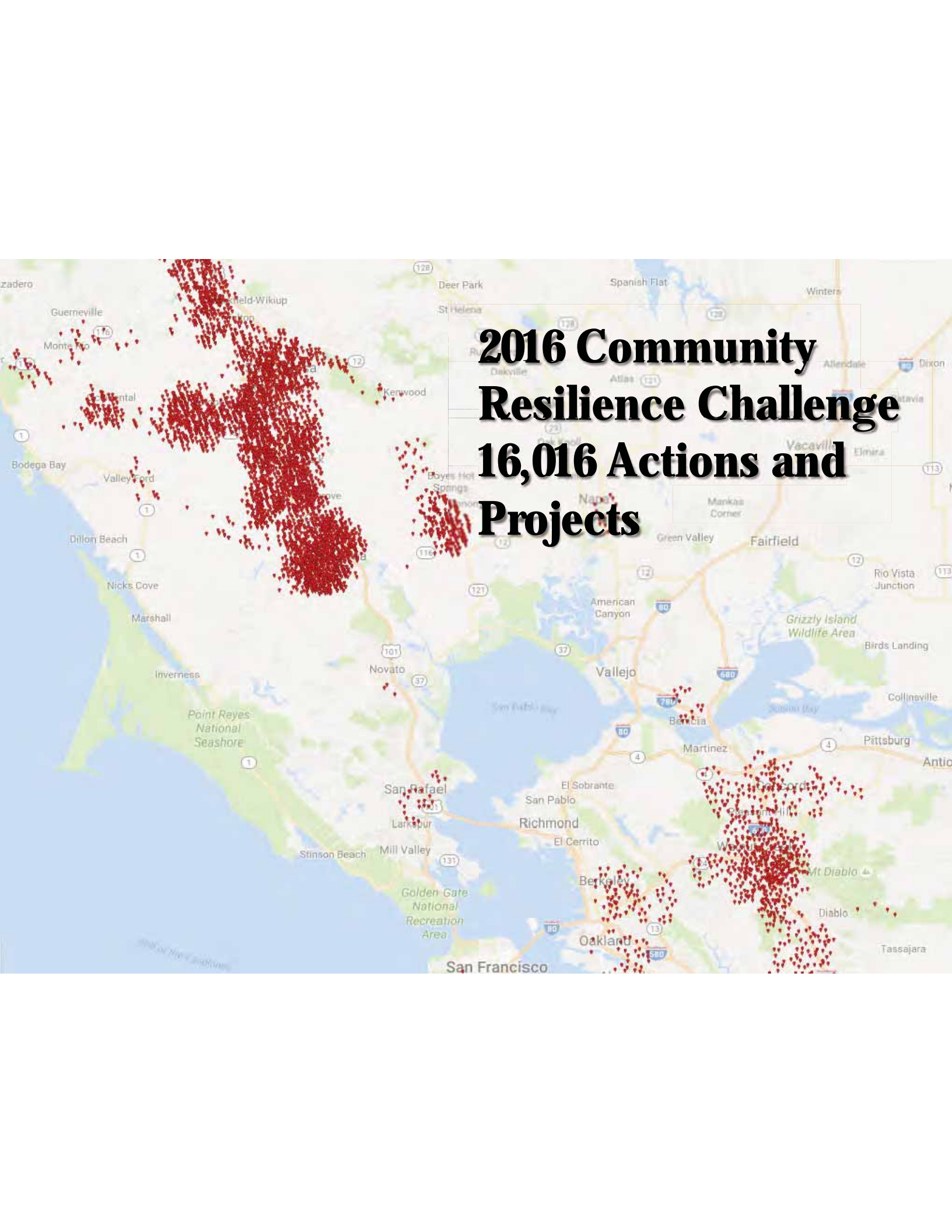


# 350 Home and Garden Challenge 2010- 628 Actions



# 350 Home and Garden Challenge 2012- 2304 Actions



A map of the San Francisco Bay Area showing the distribution of 16,016 community resilience actions and projects. The dots are concentrated in the North Bay (Marin and Contra Costa counties), the East Bay (Alameda and Contra Costa counties), and the South Bay (San Francisco, Alameda, and Contra Costa counties). Major cities like San Francisco, Oakland, Berkeley, San Rafael, and Vallejo are labeled. The map also shows major highways (I-80, I-580, I-680, SR-92, SR-101, SR-108, SR-125, SR-126, SR-138, SR-152, SR-168, SR-205, SR-238, SR-242, SR-262, SR-268, SR-37, SR-47, SR-58, SR-84, SR-88, SR-101, SR-108, SR-125, SR-126, SR-138, SR-152, SR-168, SR-205, SR-238, SR-242, SR-262, SR-268) and natural areas like Point Reyes National Seashore and Golden Gate National Recreation Area.

# 2016 Community Resilience Challenge

## 16,016 Actions and Projects





# Share the Story



## Local volunteers have much to learn

### ROHNERT PARK/COTATI

by Lydia Hopkins Staff Writer  
Approximately 20 people showed up at Robnett Park in Rohnert Park on Monday morning to work on the site. The weather was perfect. The sun was out, and the wind was just what we needed to get the job done.



Rob Hopkins, a program director with the organization Daily Acts, was last week's lucky winner of the...

## Park a pocket of sust

Thirty hours, four months of planning and a lot of hard work later, the park is now a pocket of sustainability. The project was a success, and the park is now a model for other communities.



## Thinking about using greywater?

Daily Acts hosts a greywater system installation course July 12-14



Greywater is the water left over from household activities such as washing dishes, laundry, and showering. It can be recycled and used for irrigation, which can save a lot of water. Daily Acts is offering a three-day course to teach people how to install a greywater system.

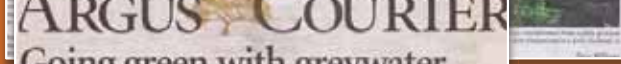


Jul Snyder on Cotati results hold promise  
Dave Williams reviews 2012 London Olympics  
Bill Hanson writes about A voice deer season



## Greywater going high tech in homes

Daily Acts organization



## PETALUMA ARGUS COURIER

## Going green with greywater

Petaluma home is first in the county with a permitted system that uses old wash water for irrigation



The greywater system is a permit-required system that uses old wash water for irrigation. It is the first of its kind in the county.



**BEFORE**



**AFTER**



**AFTER**



**AFTER**

# Community Aligned in Acts of Care and Celebration



# Building Partnerships

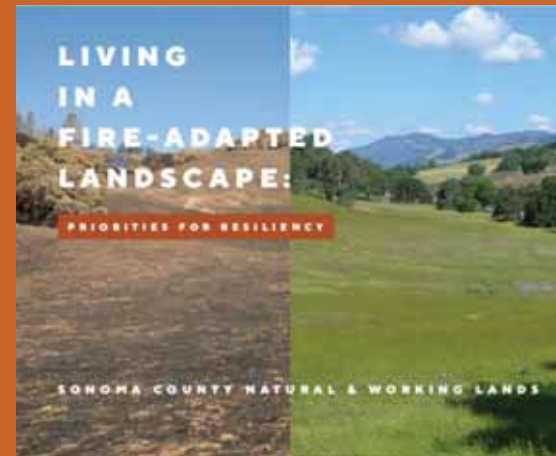




# Convene and Connect



# Convene, Connect...Create



# Free Landscape Design Templates



- Native/Adaptive – native and fire safer plants
- Eco-Edible – a mix of edible and habitat plantings that maximize sustainability
- Contemporary – modern, minimalistic and clean look that is easy to maintain
- Cottage – cottage garden with natural materials and colorful plantings

**July 1 – 43% of 504 rebuild landscape plans based off the templates**



### Landscapes Adaptive to Climate Change

- Warmer conditions in summer and winter
- The North Bay region is becoming more arid
- Rainfall is likely to be more variable in extremes
- Runoff may be increasingly flashy



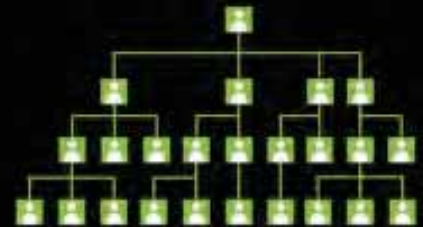


# EBMUD/Norcal Resilience Network Collaboration

- 450 people engaged at 7 work parties
- 100 educated about conservation
- 500 interacted with display
- Install sites for rainwater, greywater, drip systems: Elementary school; community garden; housing co-op; underserved community demo sites



# Collaborating Across Government and Grassroots



## ADAPTIVE NETWORK

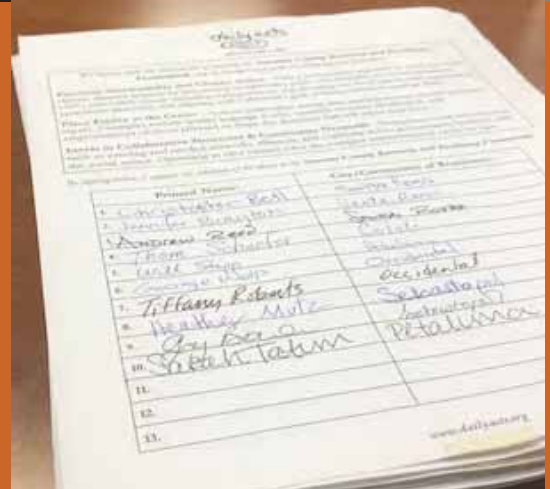
Intrinsic motivation to align with internal values/purpose  
Clusters, Community structure, relationships  
Boundary crossing connectivity  
Co-created change, leadership as a system  
Applied learning focus  
Stories, social influence, spaces/convening/curating  
Present to future focus  
Dynamic, emergence, transient, multiple

Aligned via Shared Purpose

## HIERARCHICAL NETWORK

Extrinsic motivation to align with mission, vision & goals  
Authority structure, transactions  
Division and hierarchy  
Top-down change, leadership SA a linear  
Execution focus  
Strategy, metrics, reporting  
Past to future focus  
Structure, routine, permanent, uniform

# Building Public and Political Will



# Climate Water Nexus



**CHEMICAL SOIL**



**ORGANIC SOIL**



**RAISING ORGANIC  
MATTER 1% WILL  
RETAIN AN EXTRA  
20,000 GALS OF WATER  
PER ACRE**

# Carbon Sequestration in Cities Climate Victory Gardens!

Climate

A screenshot of a Fast Company article. The header shows the Fast Company logo, a 'FOLLOW' button, and a search icon. The article title is 'How Boulder is creating a path for cities to scale up carbon sequestration', dated 12.05.19. The sub-headline reads: 'The city's senior policy adviser for climate, sustainability, and resilience explains how it's using its resources to find natural ways to remove carbon from the atmosphere and embed it in city owned land.' Below the text is a photograph of a cityscape at sunset, with a large black circle superimposed over the sky, representing carbon sequestration.

12.05.19

## How Boulder is creating a path for cities to scale up carbon sequestration

The city's senior policy adviser for climate, sustainability, and resilience explains how it's using its resources to find natural ways to remove carbon from the atmosphere and embed it in city owned land.



Daily Acts inspires transformative action to create more nourishing, connected and resilient communities.